



SEWAGE  
TREATMENT  
&  
LIFTING

WASTEWATER  
HANDLING

AERATION  
&  
MIXING  
SYSTEMS

WASTEWATER  
COLLECTION  
&  
PUMPING



better together

# REFERENCE BOOK

zenit.com



# ZENIT GROUP

Zenit's history began more than 60 years ago. Today, it has grown into a company with strong international presence, supported by hundreds of loyal employees, partners and associates all over the world.

Our core business is the design, manufacture and distribution of electric submersible pumps for residential and industrial use.

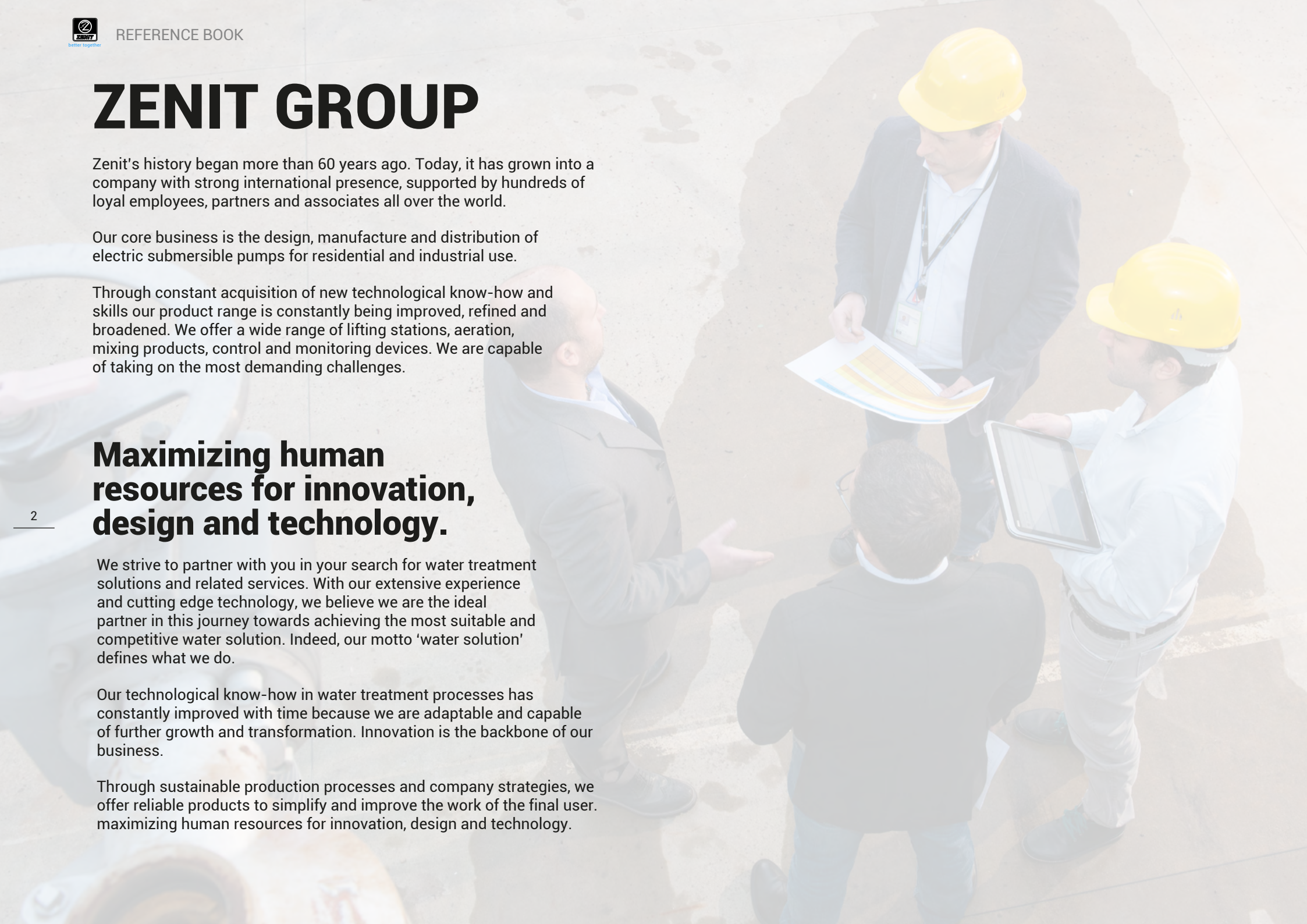
Through constant acquisition of new technological know-how and skills our product range is constantly being improved, refined and broadened. We offer a wide range of lifting stations, aeration, mixing products, control and monitoring devices. We are capable of taking on the most demanding challenges.

## Maximizing human resources for innovation, design and technology.

We strive to partner with you in your search for water treatment solutions and related services. With our extensive experience and cutting edge technology, we believe we are the ideal partner in this journey towards achieving the most suitable and competitive water solution. Indeed, our motto 'water solution' defines what we do.

Our technological know-how in water treatment processes has constantly improved with time because we are adaptable and capable of further growth and transformation. Innovation is the backbone of our business.

Through sustainable production processes and company strategies, we offer reliable products to simplify and improve the work of the final user. Maximizing human resources for innovation, design and technology.





5	ITALY
44	EUROPE
121	AFRICA & MIDDLE EAST
146	ASIA & OCEANIA
180	NORTH/SOUTH AMERICA







# ITALY

EST. EMPTY...  
FOR ALL...  
EST. EMPTY...  
FOR ALL...

MIN. FLOW FROM LOADING PUMPS  
RECYCLE PUMPS  
VAPOR LINE  
TANK TO STORAGE



# A2A SPA - BRESCIA

ENERGY, WATER AND GAS MANAGEMENT



**COUNTRY**

Verziano

**PLANT/USE**

Oxydation tank within WWTP

**PRODUCTS**

Tubular diffusers OXYTUBE 2-750 - Nr. 880



OXYTUBE





# GRECI SPA - PARMA

FRUIT AND VEGETABLES PROCESSING



**COUNTRY**

Parma

**PLANT/USE**

Lifting station

**PRODUCTS**

SMP 1000/4/150 - Nr.6



SMP





# HERA SPA - BOLOGNA

ENERGY, WATER AND GAS MANAGEMENT



**COUNTRY**

Modena

**PLANT/USE**

WWTP

**PRODUCTS**

DGN 150/6/80 - Nr. 3

SBN 5000/4/200 - Nr. 4

MAN 400/4/100 - Nr. 8

Mixer PRO 750/4/4/600 - Nr. 3



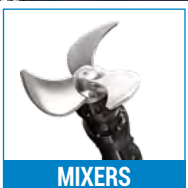
DGN



SBN



MAN



MIXERS



UNIQA





# ACEA PINEROLESE INDUSTRIALE SPA

ENERGY, WATER AND GAS MANAGEMENT



**COUNTRY**

Pinerolo

**PLANT/USE**

First flush diverters

**PRODUCTS**

DGP 1500/4/125 - Nr.4



DGP





# PIZZOLI SPA - BOLOGNA

FOOD PROCESSING

**COUNTRY**

Budrio

**PLANT/USE**

Oxydation tank whitin WWTP

**PRODUCTS**

OXYTUBE 2-750 - Nr. 64

OXYPLATE 9" EPDM LP - Nr. 500

PRO 400/6/06/850



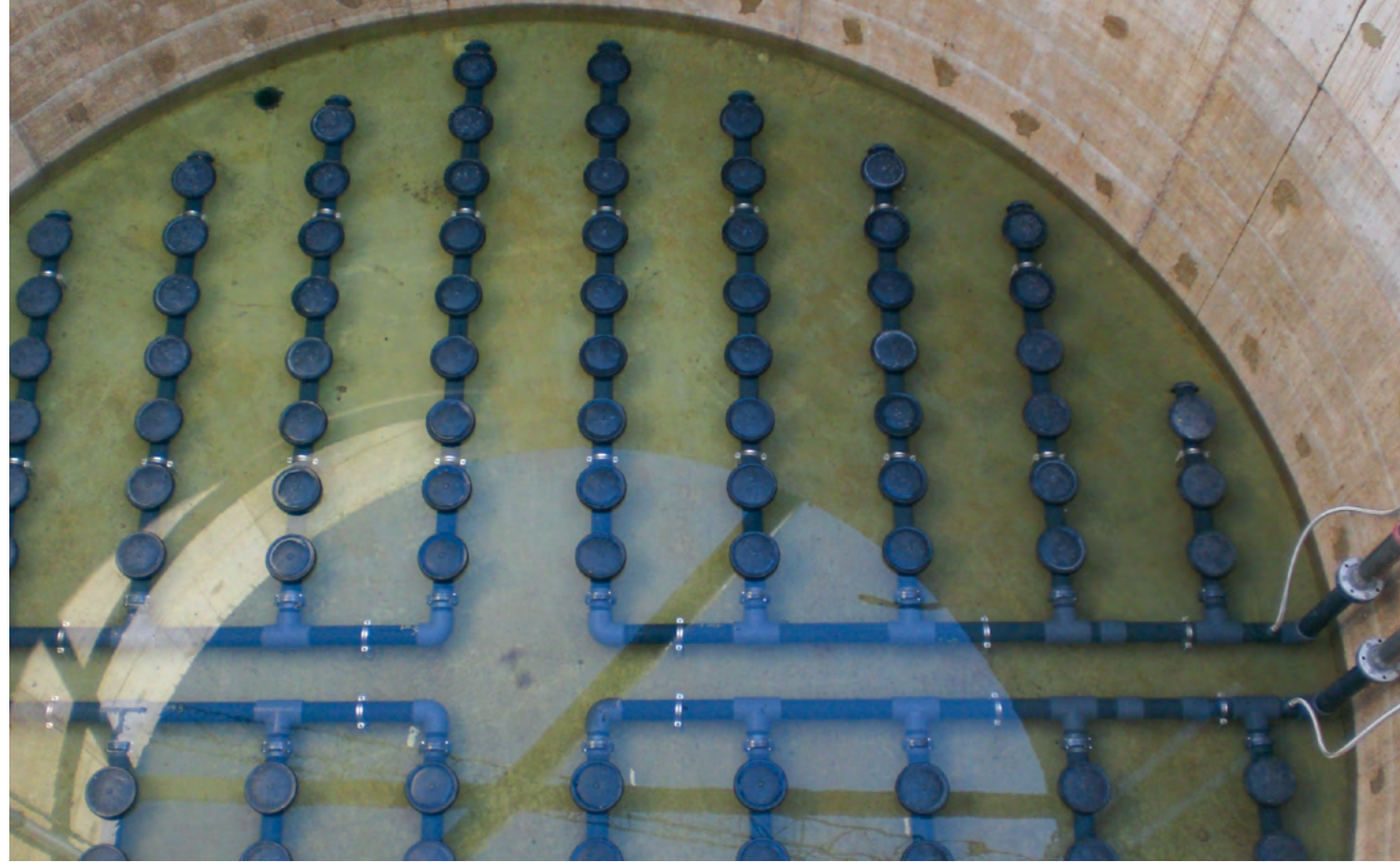
OXYTUBE



OXYPLATE 9" - 12"



MIXERS





# TECNO IDRO SRL - BRESCIA

WATER TREATMENT PLANTS DESIGN AND CONSTRUCTION



## COUNTRY

Brescia

## PLANT/USE

Primary water lifting station

## PRODUCTS

DRP 1000/4/150 - Nr.3



DRP





# CONSORZIO TREVI SPA

HIGH SPEEDS TRAIN STATION



**COUNTRY**

Bologna

**PLANT/USE**

High speed train station - groundwater lifting station

**PRODUCTS**

SBN 5000/4/150 - Nr. 2

APP 1000/2/G50H - Nr. 3



SBN



APP





# B.I.M. - BERGAMO

COMO LAKE CONSORTIUM



**COUNTRY**

Pittanzelle

**PLANT/USE**

Oxydation tank whitin WWTP

**PRODUCTS**

Disc diffusers OXYPLATE 9" - Nr.152



OXYPLATE 9"-12"





# ATAC CIVITANOVA SPA

ENERGY, WATER AND GAS MANAGEMENT



## COUNTRY

Civitanova Marche

## PLANT/USE

Oxydation tank

## PRODUCTS

Removable ramps with tube diffusers mod.

OXYTUBE 2-750 EPDM LP - Nr. 156

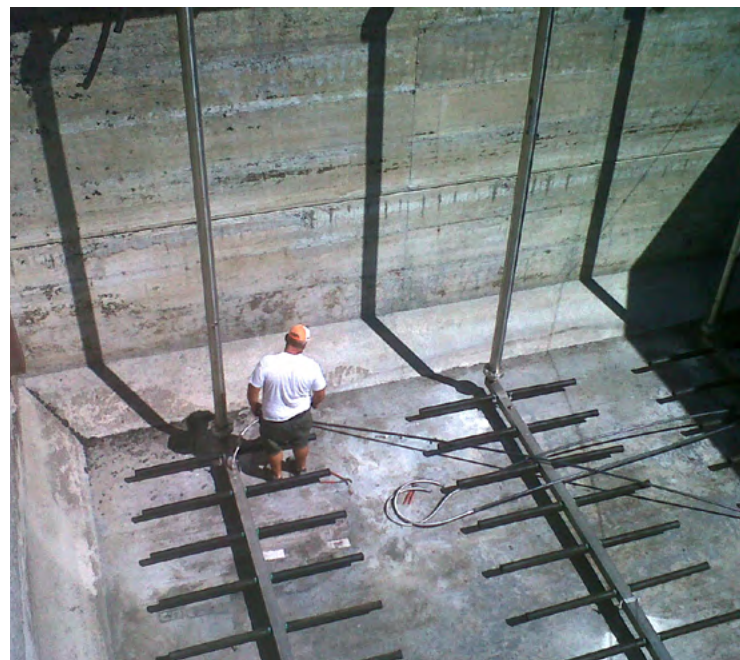
MIXER PRO 300/4/6/550



OXYTUBE



MIXERS





# MERCK SERONO SPA

PHARMA INDUSTRY

**COUNTRY**

Rome

**PLANT/USE**

Oxydation tank

**PRODUCTS**Aeration system with tube diffusers mod.OXYTUBE  
2-750 EPDM LP - Nr. 60

OXYTUBE





# MARCHE MULTISERVIZI SPA

INTEGRATED WATER CYCLE MANAGEMENT



## COUNTRY

Urbania  
Cagli  
Villa Ceccolini

## PLANT/USE

WWTP

## PRODUCTS

Tube diffusers OXYTUBE 2-750 EPDM LP - Nr. 192  
Tube diffusers OXYTUBE 2-500 EPDM LP - Nr. 80



OXYTUBE





# ACQUE NORD SPA - NOVARA

INTEGRATED WATER CYCLE MANAGEMENT



**COUNTRY**

Mergozzo

**PLANT/USE**

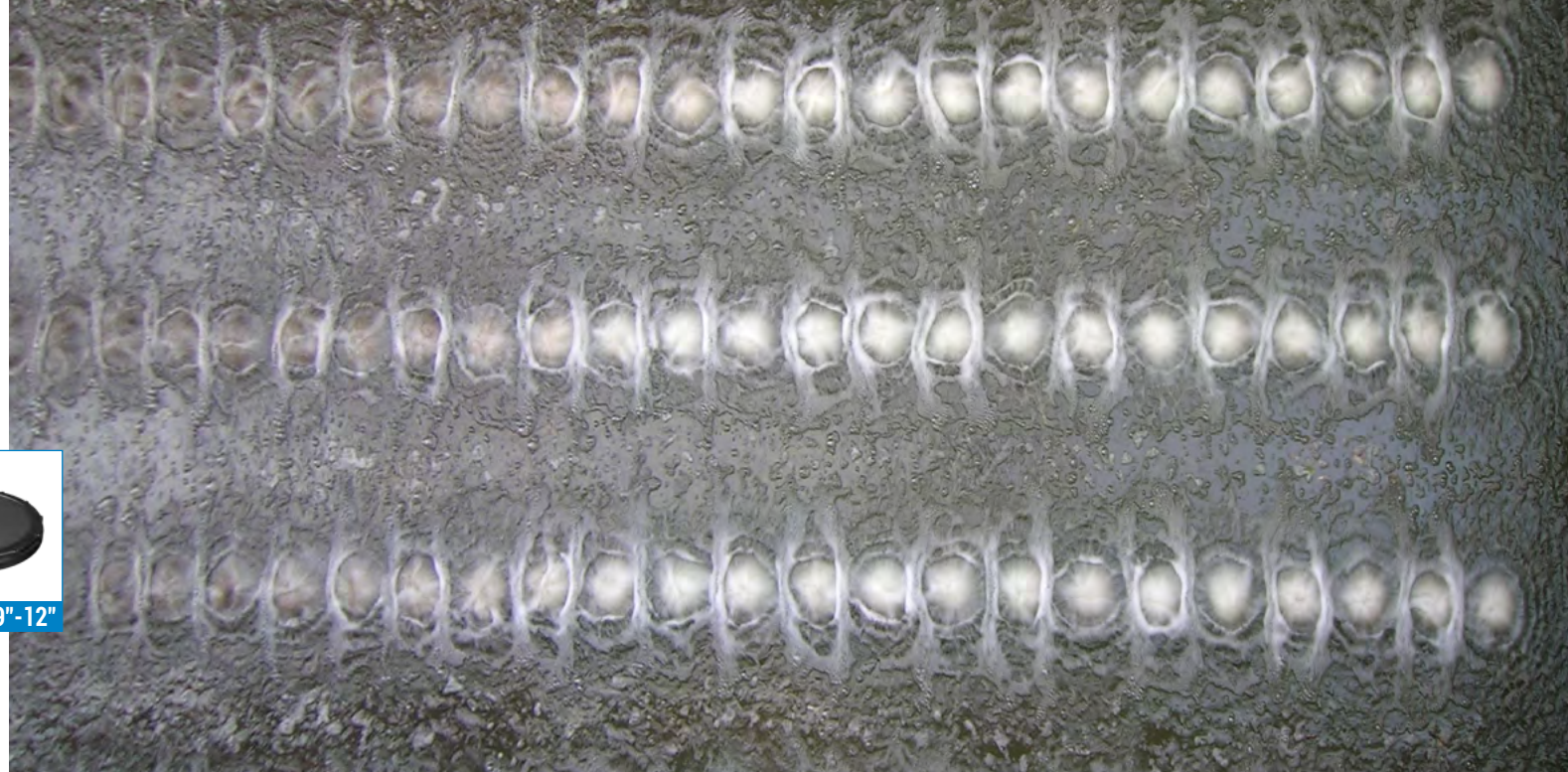
WWTP

**PRODUCTS**

Aeration system with  
OXYPLATE 9" - 12"



OXYPLATE 9" - 12"



# ACQUE NORD SPA - NOVARA

INTEGRATED WATER CYCLE MANAGEMENT



**COUNTRY**

Verbania

**PLANT/USE**

Water treatment

**PRODUCTS**

Uniqa OC 150D 7.5/4 AW 222

Uniqa OC 150D 5.5/4 AW 220

Uniqa V 100B 7.5/4 AW 235



UNIQA



# IRIS ACQUA - GORIZIA

WATER TREATMENT PLANTS DESIGN AND CONSTRUCTION

**COUNTRY**

Gorizia

**PLANT/USE**

Lifting plant Grado municipality

**PRODUCTS**

Uniqa OC 100E 7.5/4 AW



UNIQA



# ASET SPA - FANO

INTEGRATED WATER CYCLE MANAGEMENT

**COUNTRY**

Fano

**PLANT/USE**

Water treatment

**PRODUCTS**

Uniqa V 100B 5.5/4 AW 210



UNIQA



# LATTEGRA SPA - PIACENZA

DAIRY INDUSTRY



**COUNTRY**

Gragnano Trebbianese

**PLANT/USE**

WWTP

**PRODUCTS**

Disc diffuser OXYPLATE 12" - Nr. 132



OXYPLATE 9"-12"





# CREMONINI SPA - MILANO

PRODUCTION, DISTRIBUTION AND CATERING



## COUNTRY

Ospedaletto Lodigiani

## PLANT/USE

WWTP and equalization tank

## PRODUCTS

Mixer PRS 200/6/1/285 - Nr. 2



MIXERS







# OLIMPIAS SPA - TREVISO

TEXTILE INDUSTRY



**COUNTRY**

Verona

**PLANT/USE**

WWTP

**PRODUCTS**

SBN 5000/4/200 - Nr. 2



SBN





# IDROTECNICA SRL - VIBO VALENTIA

CHP SYSTEMS DESIGN AND IMPLEMENTATION



## COUNTRY

Guardavalle Marina

## PLANT/USE

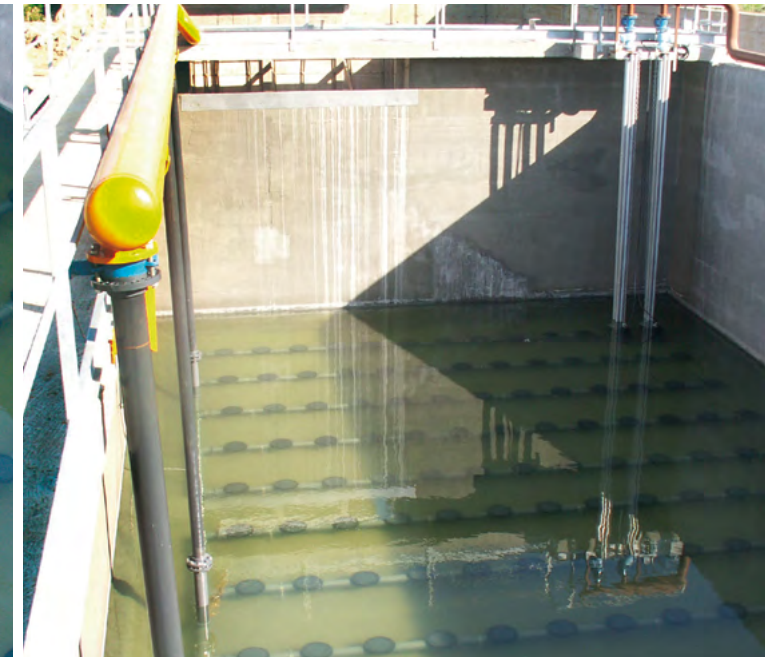
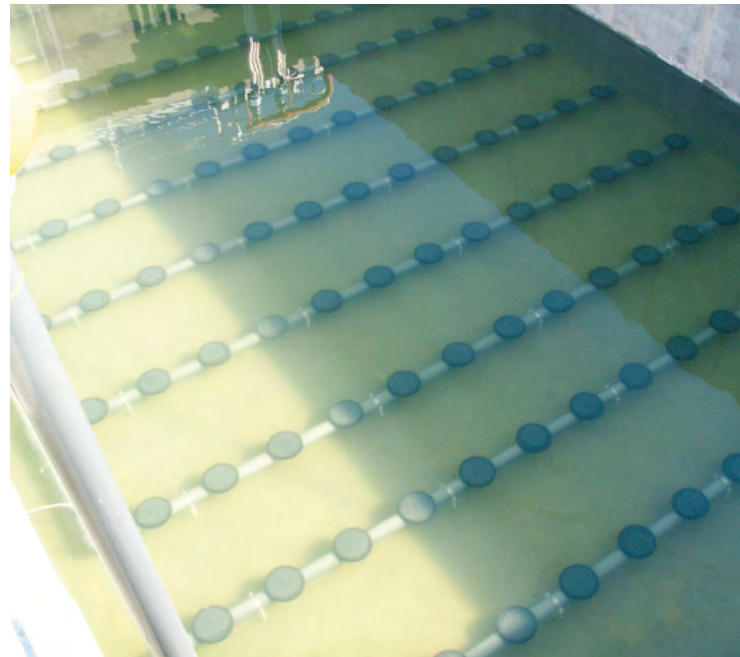
WWTP and nitrification tank

## PRODUCTS

Aeration system with  
OXYPLATE 9" EPDM LP - Nr. 210



OXYPLATE 9"-12"





# MARCHE MULTISERVIZI SPA

INTEGRATED WATER CYCLE MANAGEMENT



## COUNTRY

Acqualagna

## PLANT/USE

WWTP and nitrification tank

## PRODUCTS

OXYPLATE 12" EPDM LP - Nr. 288



OXYPLATE 9"-12"





# ACQUE NORD SPA - NOVARA

INTEGRATED WATER CYCLE MANAGEMENT



**COUNTRY**

Villadossola (VB)

**PLANT/USE**

Oxydation tank

**PRODUCTS**

OXYPLATE 9" EPDM LP - Nr. 196



OXYPLATE 9"-12"





# CPL CONCORDIA - SOC. COOP.

PLANTS DESIGN AND CONSTRUCTION



**COUNTRY**

Concordia sul Secchia

**PLANT/USE**

Process/machining wastewater lifting

**PRODUCTS**

DRF 75/2/G40V-EX - Nr. 30



DRF





# CONSERVE ITALIA SPA - BOLOGNA

FOOD GROUP

**COUNTRY**

Pomposa

**PLANT/USE**

Lifting station

**PRODUCTS**

SBN 3000/4/200 - Nr. 1



SBN



# PATHEON SRL

**COUNTRY**

Anagni

**PLANT/USE**

WWTP, pharmaceutical industry

**PRODUCTS**

DRY 300/4/100 - Nr. 4

DGX 150/4/80 - Nr. 6

MIXER PRO 300/4/06/550 - Nr. 4



DRY



DGX



MIXERS



# ATAC CIVITANOVA SPA

ENERGY, WATER AND GAS MANAGEMENT



**COUNTRY**  
Civitanova Marche

**PLANT/USE**  
Primary water lifting station

**PRODUCTS**  
Uniqua OC 250B 45/6 AW 435



UNIQA





# LADURNER IMPIANTI SRL - BOLZANO

PLANTS DESIGN AND CONSTRUCTION



COUNTRY

Rieti

PLANT/USE

WWTP

PRODUCTS

DRN 150/6/80 - Nr. 7

DRN 300/4/80 - Nr. 2

DRP 550/6/150 - Nr. 2



DRN



DRP

27



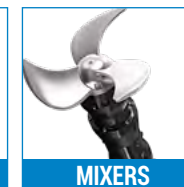
DRN



DGN



DGP



MIXERS

# LADURNER IMPIANTI SRL - BOLZANO

PLANTS DESIGN AND CONSTRUCTION



COUNTRY

Roma

PLANT/USE

WWTP from marble quarries

PRODUCTS

DGP 550/4/80 - Nr. 4

DGN 200/4/100 - Nr. 4

DRN 250/6/150 - Nr. 4

DGN 200/4/80 - Nr. 2

DGP 750/4/100 - Nr. 2

DGN 300/4/100 - Nr. 2

MIXER PRS 200/6/01/285 - Nr. 14



# HENRAUX SPA - LUCCA

MARBLE MINING AND PROCESSING



## COUNTRY

Lucca

## PLANT/USE

WWTP from marble processing

## PRODUCTS

Uniqua V 100B 15/4 AW 266



UNIQA





# ACCIAIERIE DI SICILIA SPA - CATANIA

METAL SCRAP RECOVERY AND PROCESSING



**COUNTRY**

Catania

**PLANT/USE**

WWTP lamination and debris washing

**PRODUCTS**

Uniqa V080B 7,5/2 AW 155



UNIQA





# PIETRA SERENA - CASONE GROUP

STONE QUARRYING AND PROCESSING



## COUNTRY

Castiglione dei Pepoli

## PLANT/USE

WWTP from marble processing

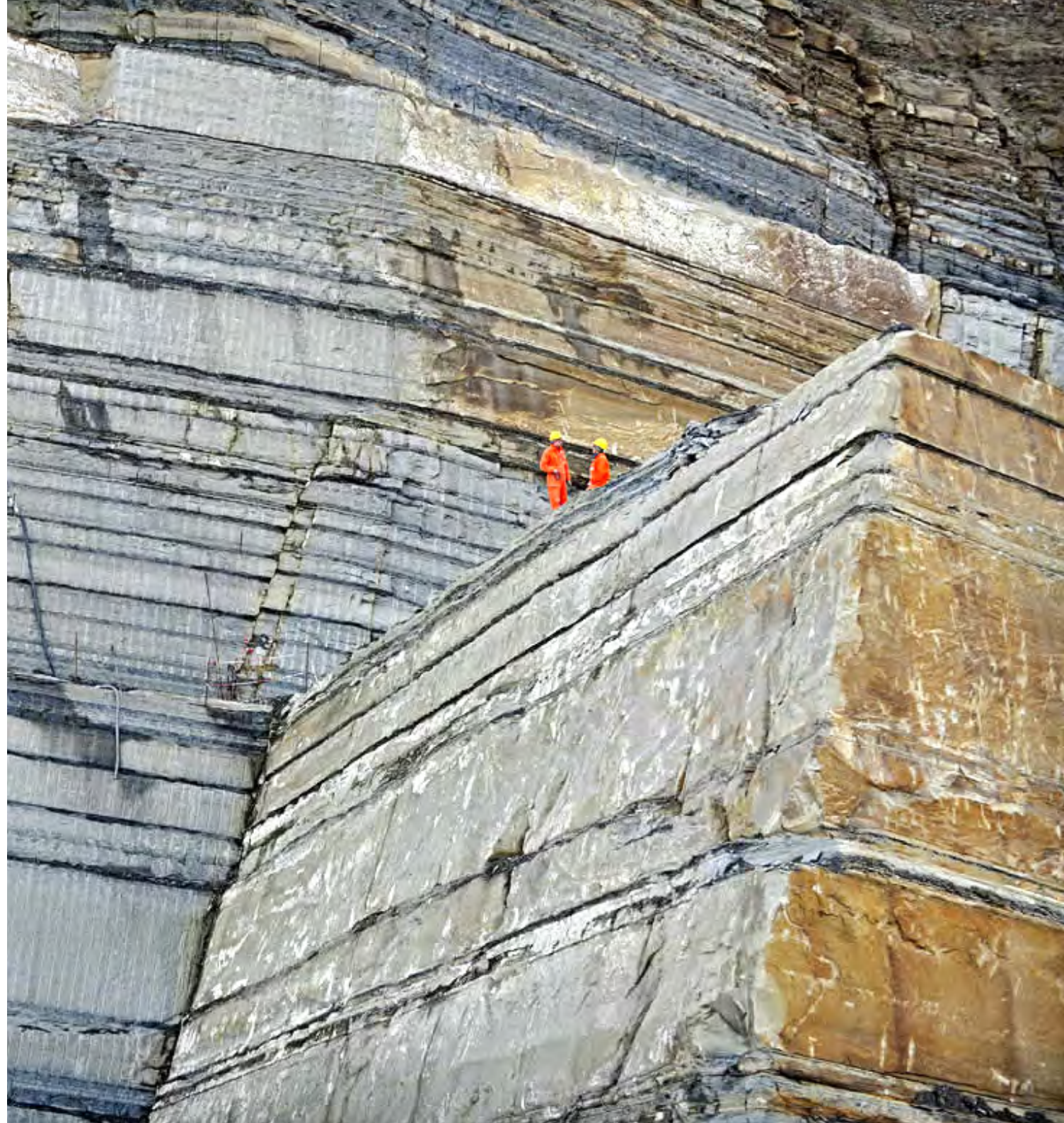
## PRODUCTS

Uniqa OC 150 F 18.5/4 AW 275 - Nr.1

SMP 2000/4/150 - Nr.1



UNIQA





# CIIP SPA - ASCOLI PICENO

INTEGRATED WATER CYCLE MANAGEMENT



**COUNTRY**

Ascoli Piceno

**PLANT/USE**

Lifting plant

**PRODUCTS**

Uniqua V 100B 5.5/4 AW 210



31



# TENNACOLA - FERMO

INTEGRATED WATER CYCLE MANAGEMENT



**COUNTRY**

Sant'Elpidio a Mare

**PLANT/USE**

Lifting plant

**PRODUCTS**

Uniqua OC 150D 4/4 AW 210

Uniqua OC 150D 5.5/4 AW 220





# IES BIOGAS

BIOGAS PLANTS DESIGN AND INSTALLATION



**COUNTRY**

Cremona

**PLANT/USE**

Cogeneration plant, Process/machining wastewater lifting

**PRODUCTS**

MAN 550/2/100 - Nr. 4





# SERVIZI AMBIENTALI SPA - SAVONA

SEWERS, PUMPING SYSTEMS MANAGEMENT, COLLECTION AND GRILLING



**COUNTRY**

Borghetto Santo Spirito

**PLANT/USE**

WWLP

**PRODUCTS**

Uniqa OC200C 160/4 AD



UNIQA





# ACQUALATINA S.P.A. - LATINA



**COUNTRY**

Formia

**PLANT/USE**

WWLP

**PRODUCTS**

Uniqa OC 200C 75/6 AW 490





# ACQUA NOVARA VCO SPA

**COUNTRY**

Vogogna (VB)

**PLANT/USE**

WWLP

**PRODUCTS**

Uniqua V 100B 5,5/4 AW 220 PA - Nr. 3



UNIQA





# ACQUA NOVARA VCO SPA



**COUNTRY**  
Calami (VB)

**PLANT/USE**  
WWLP

**PRODUCTS**  
Uniqa V 100B 5,5/4 AW 220 PA - Nr. 3



UNIQA





# MUNICIPALITY

**COUNTRY**

Brandizzo (TO)

**PLANT/USE**

Rain water lifting station

**PRODUCTS**

Uniqa OC 150A 11/4 AW 245 PF - Nr. 2  
Uniqa OC 150A 11/4 AW 245 PA - Nr. 1  
Uniqa OC 150F 15/4 AW 269 PF - Nr. 2  
Uniqa OC 150F 15/4 AW 269 PA - Nr. 1  
Uniqa OC 150D 7,5/4 AW 230 PF - Nr. 2  
Uniqa OC 150D 7,5/4 AW 230 PA - Nr. 1  
DGF 200/2/G50H A1CT/50 - Nr. 2



DGF



UNIQA





# SACLÀ SPA - ASTI

FOOD PROCESSING



COUNTRY

Asti

PLANT/USE

Process water lifting plant

PRODUCTS

DGN 300/4/100 CCE - Nr. 4



DGN



# MUNICIPALITY OF ARZANO



COUNTRY

Arzano (Naples)

PLANT/USE

WWLP

PRODUCTS

Uniqa OC 150B 37/4 AW 330 PA - Nr.3



UNIQA



# MUNICIPALITY OF GAETA



**COUNTRY**  
Gaeta (Latina)

**PLANT/USE**  
WWLP

**PRODUCTS**  
Uniqa OC 150A 15/4 AW 270 PA - Nr.3



# MUNICIPALITY OF MINTURNO



**COUNTRY**  
Minturno (Latina)

**PLANT/USE**  
WWLP

**PRODUCTS**  
Uniqa OC 150A 15/4 AW 270 PA - Nr.3





# BURGO PAPERS

**COUNTRY**

Trieste

**PLANT/USE**

Wastewater lifting and treatment

**PRODUCTS**

ZUG OC150G 30/4AW

Jet-OXY 1/50 ZUG OC150A 15/4AW - Nr.3



SYSTEM OXY



UNIQA





# DEPURATOR PLANT OF S. CROCE SULL'ARNO



## COUNTRY

S. Croce sull'Arno (PI)

## PLANT/USE

Wastewater lifting and treatment

## PRODUCTS

Uniqua OC150F 18,5/4AW - Nr.20

Uniqua OC150F 18,5/4AW - Nr.20

Uniqua OC250C 37/4AW - Nr.3

Uniqua OC200A 37/4AW - Nr.3

Uniqua OC150D 7,5/4AW - Nr.6

MIXER ZMR 065A A 5,5/4 BG058 - Nr.24



UNIQA



MIXERS





# ACEA

INTEGRATED WATER CYCLE MANAGEMENT



## COUNTRY

Italy

## PLANT/USE

Wastewater treatment

## PRODUCTS

Mixer ZMD 030A A 1,5/6AF010

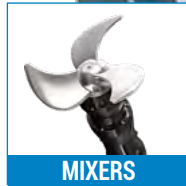
Mixer ZMD 020C A 1,5/4AE010

Mixer ZMD 030B A 2,2/6AF010

Mixer ZMD 045G A 4/8AH010

Mixer ZMR 065A A 7,5/4AH049

Mixer ZMD 020A A 1,1/4AE010



MIXERS





# ACQUALATINA SPA

INTEGRATED WATER CYCLE MANAGEMENT



## COUNTRY

Italy

## PLANT/USE

Wastewater treatment

## PRODUCTS

Uniqa OC 100J 18,5/2AW

Uniqa OC 150A 15/4AW

Uniqa OC 150B 37/4AW

Uniqa OC 150G 22/4AW

Uniqa OC 150G 22/4AW

Uniqa OC 200B 22/4AW

Uniqa OC 200B 9/6AW

Uniqa OC 300C 30/6



UNIQA







EUROPE



# FISH FARMS

**COUNTRY**

Latvia

**PLANT/USE**

WWTP

**PRODUCTS**

SBP

DRP

DGO



# LOGISTIC CENTER

**COUNTRY**

Sv. Nedjelja (Croatia)

**PLANT/USE**

Lifting station

**PRODUCTS**

GRN 300/2/G50H - Nr. 2





# MERCATOR

**COUNTRY**

Rovinj (Croatia)

**PLANT/USE**

WWTP

**PRODUCTS**

DRN 300/4/100 - Nr. 3



DRN



# MLINAR

**COUNTRY**

Zagreb (Croatia)

**PLANT/USE**

WWTP

**PRODUCTS**

DRP 1000/4/100 - Nr.2



DRP





# SUNCANA

**COUNTRY**

Turopolje (Croatia)

**PLANT/USE**

WWTP

**PRODUCTS**

SBP 1000/4/150 - Nr. 3



SBP



# UNIKOMERC

**COUNTRY**

Velika Gorica (Croatia)

**PLANT/USE**

WWTP

**PRODUCTS**

DGN 200/4/80 - Nr. 4



DGN



# NAVIS HOTEL

**COUNTRY**

Opatija/Preluk (Croatia)

**PLANT/USE**

Sanitary wastewater lifting

**PRODUCTS**

GRN 550/2/G50H - Nr. 3

GRbluePRO 100/2/G40H - Nr. 2



GRN



GR BLUEPRO





# ZAGREB ZOO

**COUNTRY**

Opatija/Preluk (Croatia)

**PLANT/USE**

Sanitary wastewater lifting

**PRODUCTS**

GRN 550/2/G50H - Nr. 3

GRbluePRO 100/2/G40H - Nr. 2

**DGO**



# MUSIKKITALO

**COUNTRY**

Helsinki (Finland)

**PLANT/USE**

WWTP and lifting station

**PRODUCTS**

DG Bluepro 75 - Nr. 1  
DGO 100/2/50 - Nr. 2  
SMP 1000/2/80 - Nr. 4  
SMP 750/2/80 - Nr. 2  
APN 300/2/50 - Nr. 6





# SUNBORN HOTELS

**COUNTRY**

Finland

**PLANT/USE**

Naantali SPA - Sunborn Hotels/Lifting station

**PRODUCTS**

DGO 200/2/80 - Nr. 5



DGO





# STOCKMANN

**COUNTRY**

Helsinki (Finland)

**PLANT/USE**

WWTP

**PRODUCTS**

DRO 150/2/50 - Nr. 1  
DGO 100/2/50 - Nr. 2  
DRP 2000/2/80 - Nr. 4  
APN 750/2/50 - Nr. 4  
APN 300/2/50 - Nr. 1  
APN 550/2/50 - Nr. 2  
SMP 1000/2/80 - Nr. 1



DRO



DGO



DRP



SMP





# KAMPIN KAUPPAKESKUS

**COUNTRY**

Helsinki (Finland)

**PLANT/USE**

WWTP

**PRODUCTS**

DRO 100/2/50 - Nr. 1  
MAN 400/2/80 - Nr. 4  
SMP 2000/4/150 - Nr. 2  
DRP 1500/4/100 - Nr. 2  
DRO 150/2/50 - Nr. 3  
DGO 100/2/50 - Nr. 5  
DRN 400/2/80 - Nr. 4  
DGO 200/2/80 - Nr. 6





# MUNICIPALITY OF LILLEHAMMER

**COUNTRY**

Norway

**PLANT/USE**

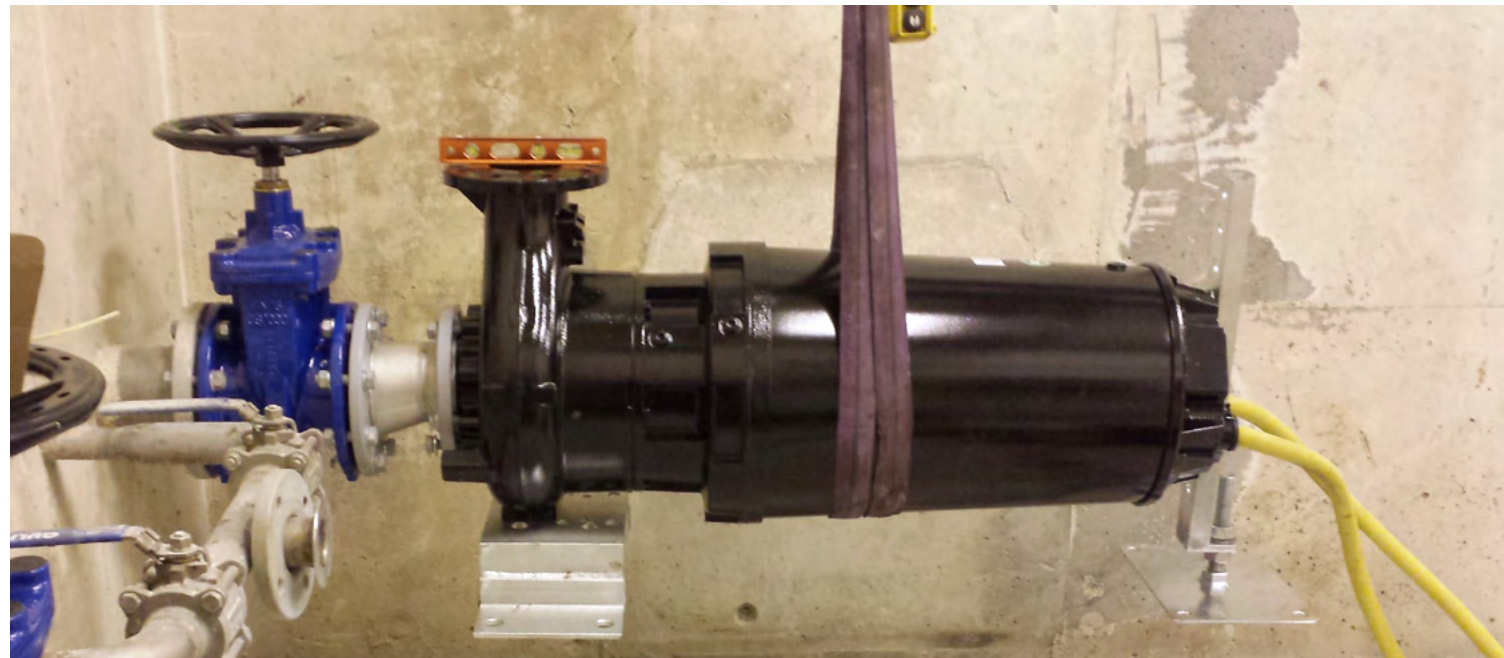
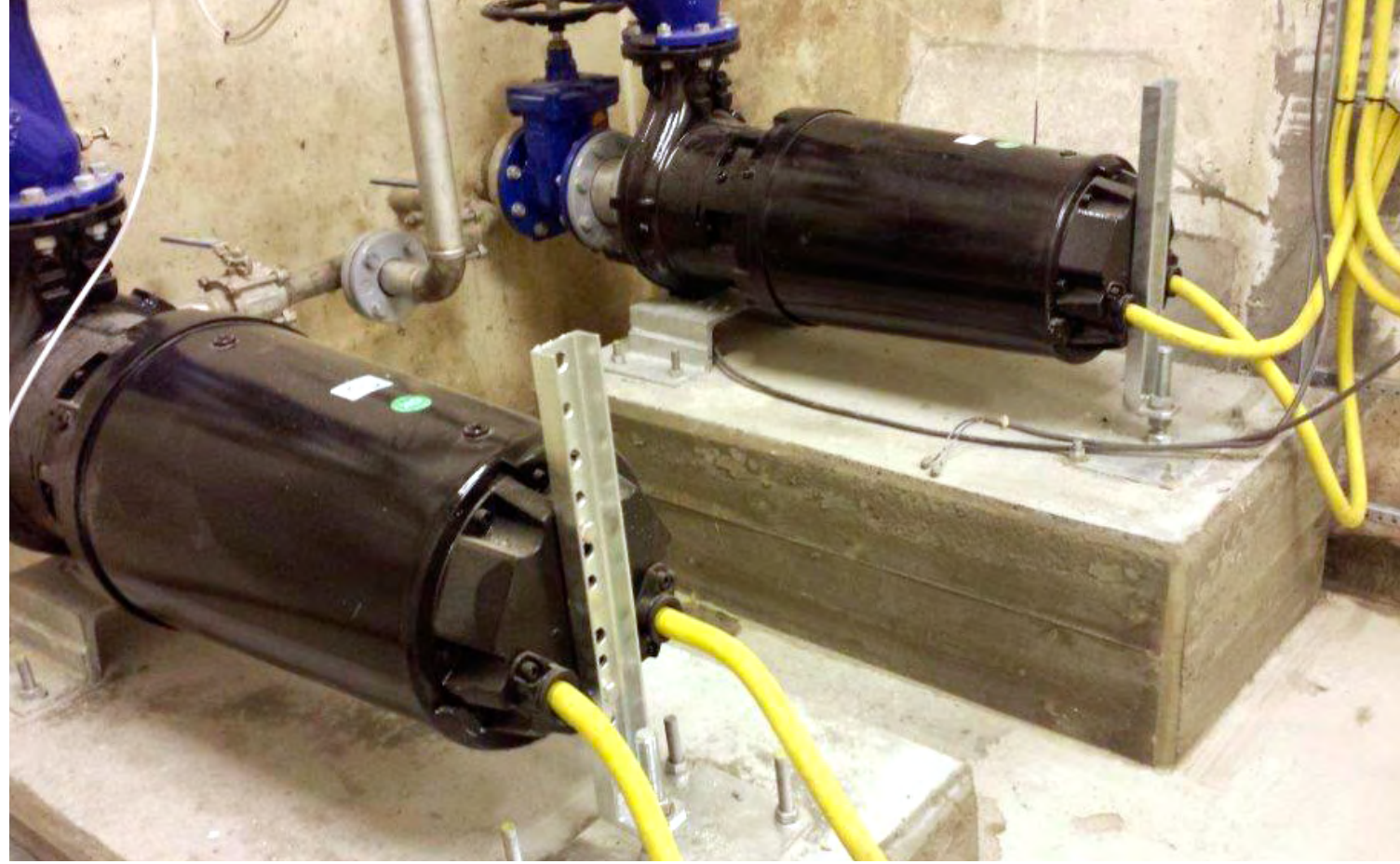
Sewage station

**PRODUCTS**

Uniqa V 100A 37/2 HD 240 - Nr. 2



UNIQA





# STOCKHOLM MUNICIPALITY

**COUNTRY**

Stockholm (Sverige)

**PLANT/USE**

Civil Water lifting

**PRODUCTS**

ZUG OC 200B 7.5/6 AD 300 - Nr. 2

DAC 200/200V - Nr. 2



UNIQA



DAC H



# ZENO

  
NAVIGATOR SUITE

A set of tools for the complete management and configuration of Zenit products and spare parts, online and offline. Select, dimension, search and offer in an easy and intuitive way.





# FRANCE TURBOT

**COUNTRY**

Tredarzec (France)

**PLANT/USE**

Lifting station

**PRODUCTS**

SBP 1500/6/200 - Nr. 15

SBP 1000/6/200 - Nr. 15



SBP





# POMMERY CHAMPAGNE CAVES

**COUNTRY**

France

**PLANT/USE**

Lifting stations

**PRODUCTS**

DGO 50/2 G50V



DGO





# PIPER HEIDSIECK CHAMPAGNE CAVES



## COUNTRY

France

## PLANT/USE

WWTP and lifting station

## PRODUCTS

S-OXY 80 1/8055 35 - Nr. 1

MAN 400/4/80 A1FT - Nr. 1

DAC-N 80/80H - Nr. 1



SYSTEM OXY



MAN



DAC H

58





# BEAUGRENELLE

COMMERCIAL CENTER - PARIS



## COUNTRY

France

## PLANT/USE

Fountains and water games

## PRODUCTS

DRN 300/2/65 - Nr. 2

DRP 1500/2/80 - Nr. 2

MAN 400/2/65 - Nr. 2

APN 400/2/G50H - Nr. 2

DRP 1000/2/80 - Nr. 2



MAN



APN



DRP



DRN



DRP





# SAINT QUENTIN

OVAL SQUARE- YVELINES



## COUNTRY

France

## PLANT/USE

Fountains and water games

## PRODUCTS

DGP 750/4/100 CC - Nr. 4





# CITY AND WWTP

SAINT MARTIN

**COUNTRY**

France

**PLANT/USE**

WWTP

**PRODUCTS**

DRP 750/4/100 60HZ - Nr. 7

OXY 1/80/100



DRP



AÉRATEUR SUBMERSIBLE



# SAINT GERY FOUNTAIN

VALENCIENNES

**COUNTRY**

France

**PLANT/USE**

Fountains and water games

**PRODUCTS**

DRN 250/2/65 - Nr.5

DRN 300/2/65 - Nr.2

DRN 400/2/65 - Nr.4



DRN



# FOUNTAIN BRIARE PLAZA

VILLENEUVE-SUR-YONNE

**COUNTRY**

France

**PLANT/USE**

Fountain and water games

**PRODUCTS**

DRN 300/4/80



DRN



# FOUNTAIN

CRÉTEIL

**COUNTRY**

France

**PLANT/USE**

Fountain and water games

**PRODUCTS**

APP 750/2/G50H - Nr. 5

DRP 550/4/100 - Nr. 3



APP



DRP



# FOUNTAIN

BOIS COLOMBES



## COUNTRY

France

## PLANT/USE

Fountain and water games

## PRODUCTS

DGO 150/2/G50H - Nr.2

DRP 1000/4/100 - Nr.4 + OXY 80/100



DGO



DRP



AÉRATEUR SUBMERSIBLE



# PLACE DE LA RÉPUBLIQUE

PARIS



## COUNTRY

France

## PLANT/USE

Fountain and water games

## PRODUCTS

DGN 200/4/80 - Nr.1



DGN



# FOUNTAIN

VILLEPINTE

**COUNTRY**

France

**PLANT/USE**

Fountain and water games

**PRODUCTS**

DGN 200/4/100 - Nr. 2

DGN 200/4/80 - Nr. 2

DRP 750/4/100 - Nr. 3



DGN



DRP





# CAMPUS VAL DE BIÈVRES

**COUNTRY**

France

**PLANT/USE**

Fountain and water games

**PRODUCTS**

DRP 550/4/80 - Nr.2

DRP 750/4/80



DRP



# LA HOUSSAYE EN BRIE

**COUNTRY**

France

**PLANT/USE**

Fountain and water games

**PRODUCTS**

DGN 250/2/80 - Nr.5

MAN 250/2/80 - Nr.6



DGN



MAN



# HOSPITAL

BAYONNE



## COUNTRY

France

## PLANT/USE

Evacuation system

## PRODUCTS

Uniqa V 080B 15/2 AW 185 - Nr. 2



UNIQA







# SHOWROOM MERCEDES

PARIS



## COUNTRY

France

## PLANT/USE

Evacuation system

## PRODUCTS

DRN 400/2/65 HT - Nr. 2





# CENTERPARCS DE LOUDUN

LOUDUN



## COUNTRY

France

## PLANT/USE

Evacuation system

## PRODUCTS

DRN 550/2/65 - Nr. 4



DRN





# LES DOCKS CENTRE COMMERCIAL

**COUNTRY**

France

**PLANT/USE**

Evacuation system

**PRODUCTS**

Uniqua OC 250H 15/4 AD 269 - Nr. 4

DAC 250/300V - Nr. 4



UNIQUA





# PARKING STADE MAYOL

**COUNTRY**

Toulon (France)

**PLANT/USE**

Lifting station

**PRODUCTS**

ZUG V100B 15/4AW 266



UNIQA







# DOMAINE D'IMBOURS



## COUNTRY

France

## PLANT/USE

Water games

## PRODUCTS

DRP 1000/2/100 - Nr. 2

DRP 1500/2/80 - Nr. 2

DRP 1500/4/80 - Nr. 1





# NÎMES RAIL STATION

**COUNTRY**

France

**PLANT/USE**

Civil lifting

**PRODUCTS**

ZUG OC200B 18,5/4AD 275 - Nr. 5

ZUG OC250C 13/6HD 334 - Nr. 5



UNIQA





# UNDERGROUND AND PARKING



## COUNTRY

Antwerpen, Belgium

## PLANT/USE

Rainwater drainage

## PRODUCTS

blue BOX EVO DN 50-65-80 - Nr. 10

ZUG V 100B 9/4 AW 255 - Nr. 2

ZUG V 080B 7,5/2 AW 160 - Nr. 4

ZUG GR 050B 4/2 AD 150 - Nr. 8

ZUG V 065A 4/2 AD 135 - Nr. 4

ZUG V 080A 4/2 AD 135 - Nr. 2

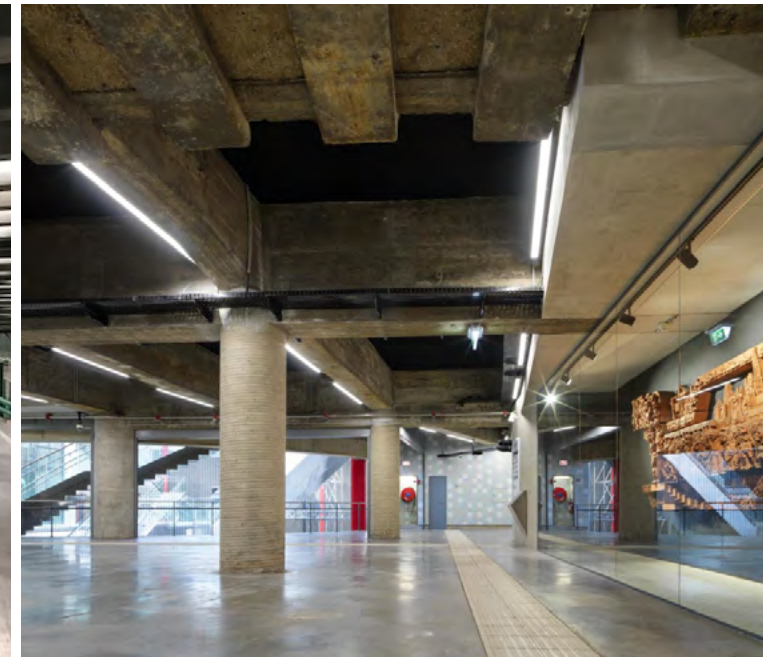
ZUG V 080B 15/2 AW 185 - Nr. 2



UNIQA



BLUE BOX EVO





# MUNICIPALITY OF LIEGI

**COUNTRY**

Liegi, Belgium

**PLANT/USE**

Trattamento acque reflue

**PRODUCTS**

Grey DGG 400/4/80 - Nr. 2



DGG





# WEEZE AIRPORT



## COUNTRY

Weeze, Belgium

## PLANT/USE

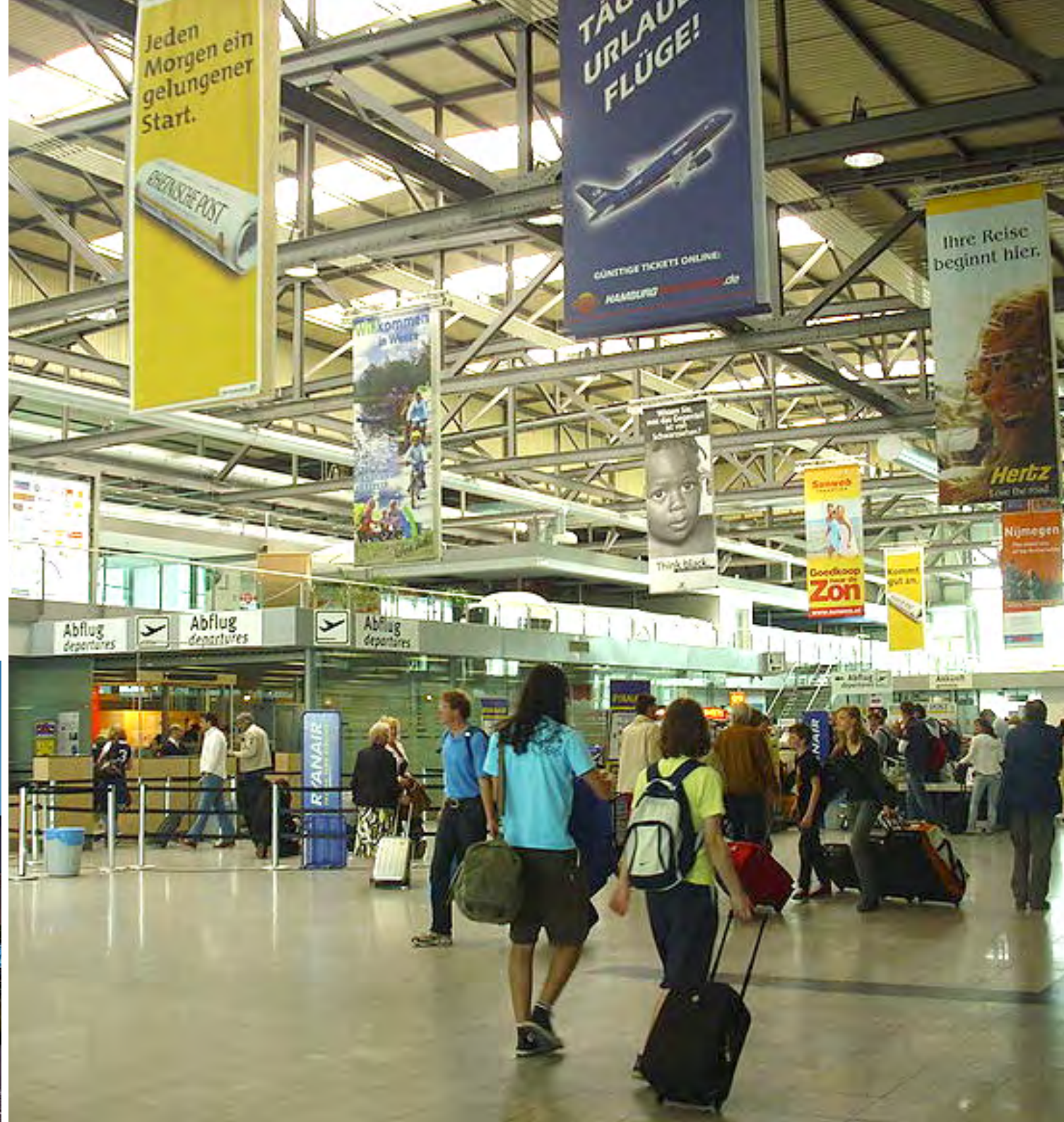
Rainwater drainage

## PRODUCTS

DR steel 75T- Nr. 10



DR-STEEL





# HOLIDAY INN

**COUNTRY**

Istanbul (Turkey)

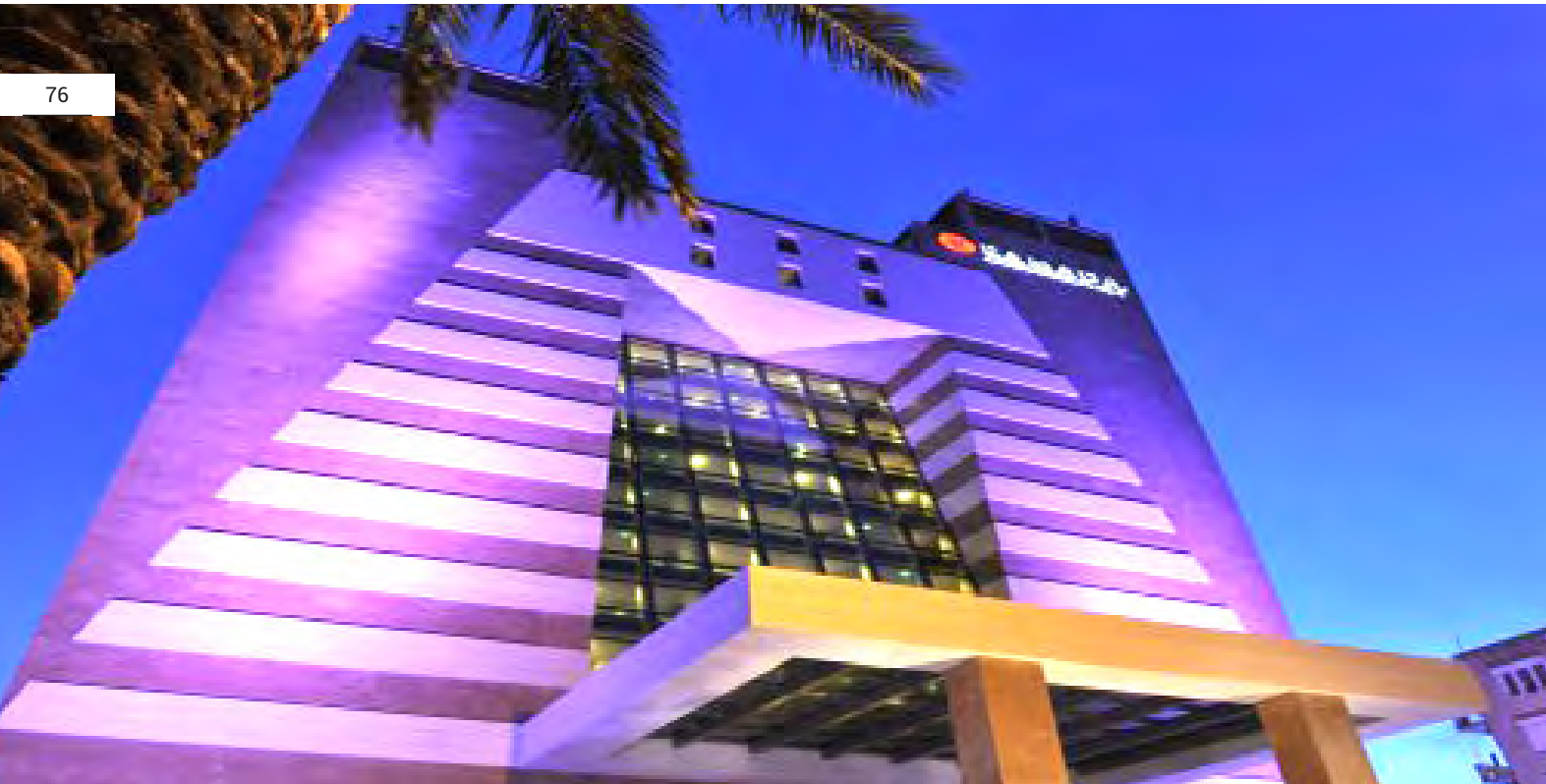
**PLANT/USE**

Lifting station

**PRODUCT**

DRE 200/2/G50V - Nr. 6

GRBluePRO 150 - Nr. 8



# RAMADA HOTELS

**COUNTRY**

Antalya (Turkey)

**PLANT/USE**

Lifting station

**PRODUCTS**

DRE 200/2/G50V - Nr. 14





FER

CONSTRUCTIONS COMPANY



## COUNTRY

Turkey

## PLANT/USE

WWTP and lifting station

## PRODUCTS

DRE 200 - Nr. 2

DRBluePRO 150 - Nr. 2

DRBluePRO 100 - Nr. 4

APN 300/2/G50H - Nr. 4

APBluePRO 200 - Nr. 6

GRN 300 - Nr. 5

GRBluePRO 200 - Nr. 5



## DUMANKAYA ADRES LOBI



## COUNTRY

Turkey

## PLANT/USE

Lifting station

## PRODUCTS

GRBluePRO 100 - Nr. 8

DRE 100/2/G50V - Nr. 4





# OTOPORT

GÜL CONSTRUCTIONS



**COUNTRY**  
Istanbul (Turkey)

**PLANT/USE**  
Lifting station

**PRODUCTS**  
GRBluePRO 100 - Nr. 4  
DRBluePRO 150 T - Nr. 4



GR BLUEPRO



DR BLUEPRO



# SKYTOWERS

AGAAGLU CONSTRUCTIONS



**COUNTRY**  
Turkey

**PLANT/USE**  
WWTP

**PRODUCTS**  
APN 300 - Nr. 2  
GRN 300 - Nr. 4



APN



GRN



# YORUM ISTANBUL SUITES

ÇALISKAN CONTS.



**COUNTRY**

Turkey

**PLANT/USE**

Lifting station

**PRODUCTS**

DRBlue 75 - Nr. 26



# ALEMDAG 1174 FLATS

EMLAK GYO (PUBLIC CORP.)



**COUNTRY**

Turkey

**PLANT/USE**

WWTP and lifting station

**PRODUCTS**

DRBluePRO 100 - Nr. 6

GRBluePRO 200 - Nr. 14



DR BLUEPRO



GR BLUEPRO



# ELAZIG AIRPORT

PUBLIC CORPORATION.



## COUNTRY

Turkey

## PLANT/USE

Lifting station

## PRODUCTS

GRBluePRO 100 - Nr. 4

DRE 75 - Nr. 6

DRE 100 - Nr. 4



GR BLUEPRO



DRE



# MARDIN AIRPORT

PUBLIC CORPORATION



## COUNTRY

Turkey

## PLANT/USE

WWTP

## PRODUCTS

DGBluePRO 75 - Nr. 6

GRBluePRO 100 - Nr. 8



DG BLUE



GR BLUEPRO



# GRAND'ACQUE CLUB

**COUNTRY**

Antalya (Turkey)

**PLANT/USE**

Water games and fountains

**PRODUCTS**

SBN 4000/4/250 - Nr. 5

**SBN**

## COMMERCIAL AREA

**COUNTRY**

Athens (Greece)

**PLANT/USE**

Lifting station

**PRODUCTS**

DRX 300/2/65 - Nr. 6

**DRX**



# OLYMPIC STADIUM

**COUNTRY**

Athens (Greece)

**PLANT/USE**

Lifting station

**PRODUCTS**

GRN 400/2/G50H - Nr. 10

DRP 750/4/150 - Nr. 2

DRP 300/4/100 - Nr. 1



GRN



DRP





# MUNICIPALITY OF KIATO

**COUNTRY**

Kiato (Greece)

**PLANT/USE**

WWTP

**PRODUCTS**

SMP 750/4/150 - Nr. 2

MAN 300/4/100 - Nr. 2



SMP



MAN





# S.NIARCHOS FOUNDATION

NEW CULTURAL CENTER



## COUNTRY

Faliron (Greece)

## PLANT/USE

Lifting station

## PRODUCTS

BOXPRO M - Nr. 8

DGO 200 - Nr. 8



BOXPRO M  
1000L



DGO





# OLYMPIC CENTER

**COUNTRY**

Athens (Greece)

**PLANT/USE**

Lifting station

**PRODUCTS**

DRP 400/2/80 - Nr. 2

DRE 200/2/G50V - Nr. 2

DRN 250/2/65 - Nr. 18





# PIG FARM

**COUNTRY**

Cyprus

**PLANT/USE**

Process/machining wastewater lifting

**PRODUCTS**

ZUG CP100F 22/2AD

GRN





# GENERAL HOSPITAL KYZYLORDA

**COUNTRY**

Kazakhstan

**PLANT/USE**

WWTP

**PRODUCTS**

SBN 5000 - Nr. 5



SBN



# MARIYNSKY HOSPITAL

**COUNTRY**

St. Petersburg (Russia)

**PLANT/USE**

Lifting station

**PRODUCTS**

MAN 550



MAN



# COTTAGE RESIDENCE PARK RAHIA



**COUNTRY**  
Vsevoložskij Rayon (Russia)

**PLANT/USE**  
Lifting station

**PRODUCTS**  
MAN 550



MAN



# LENINSKOYE VILLAGE



**COUNTRY**  
Russia

**PLANT/USE**  
Lifting station

**PRODUCTS**  
GRI 200  
GRS 100



GRI



GRS



# SUPERMARKET

NOVAYA LINIYA

**COUNTRY**

Odessa (Ukraine)

**PLANT/USE**

WWTP

**PRODUCTS**

MAN 550



## MUNICIPALITIES OF ROMNY & KANEV

**COUNTRY**

Romny and Kanev (Ukraine)

**PLANT/USE**

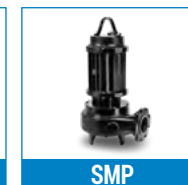
WWTP

**PRODUCTS**

DRP

SMP

SBN





# URBAN SEWAGE PLANTS



## COUNTRY

Priluki, Skadovsk, Volodarka, Borodyanka, Fastov, Donezk, Mironovka, Bar, Shostka, Tetiyev, Manykovka, Starobelsk, and more. (Ukraine)

## PLANT/USE

Urban Sewage Utility companies

## PRODUCTS

DRP  
SMP  
SBN  
MAN



DRP



SMP



SBN



MAN





# MUNICIPALITY OF CASTEL TOWN

**COUNTRY**

Castel Town (Ireland)

**PLANT/USE**

WWTP

**PRODUCTS**

DRN 300/4/80 - Nr. 2

MAN 200/4/80 - Nr. 2

DGI 100/4/80 - Nr. 2



DRN

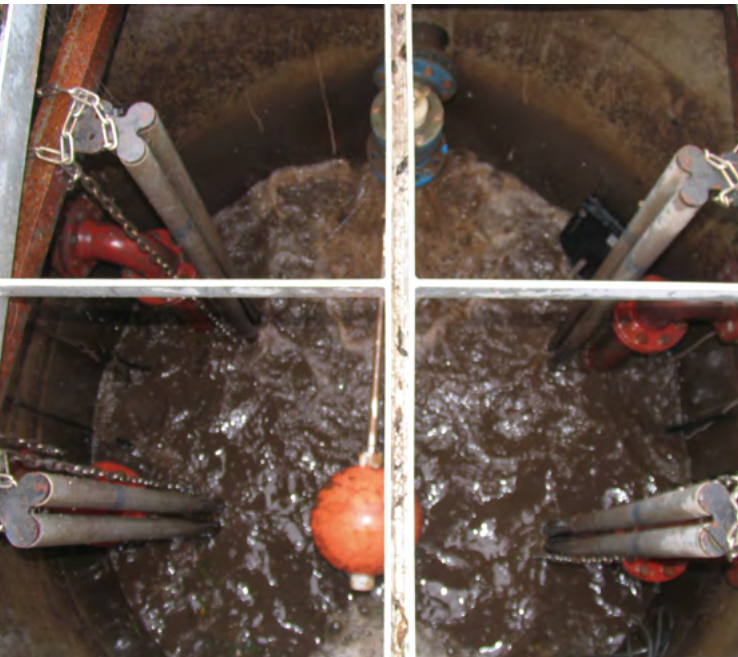


MAN



DGI

91





# MUNICIPALITY OF KILNAMARTYRA

**COUNTRY**

Kilnamartyra (Ireland)

**PLANT/USE**

WWTP

**PRODUCTS**

DGN 200/4/80 - Nr. 2

DGN 550/2/80 - Nr. 2



DGN





# MUNICIPALITY OF CHURCH TOWN

**COUNTRY**

Church Town (Ireland)

**PLANT/USE**

WWTP

**PRODUCTS**

DGN 300/4/80 - Nr. 4



DGN





# MUNICIPALITY OF HISMIRE

**COUNTRY**

Hismire (Ireland)

**PLANT/USE**

WWTP

**PRODUCTS**

DGN 150/4/80 - Nr. 2

APN 250/2/G40H - Nr. 2



DGN



APN





# IRISH WATER



## COUNTRY

Dunmore (Ireland)

## PLANT/USE

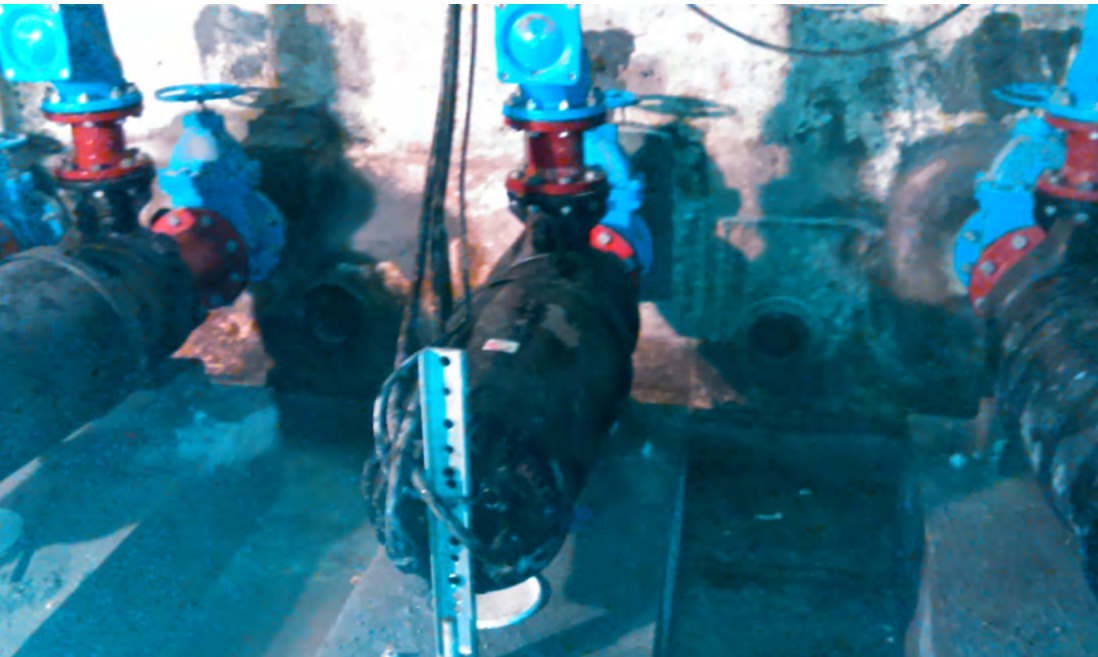
Unscreened wastewater

## PRODUCTS

Uniqua V 100C 30/4 AD 190 - Nr. 3



UNIQA





# RESTAURANT

**COUNTRY**

Viseu (Portugal)

**PLANT/USE**

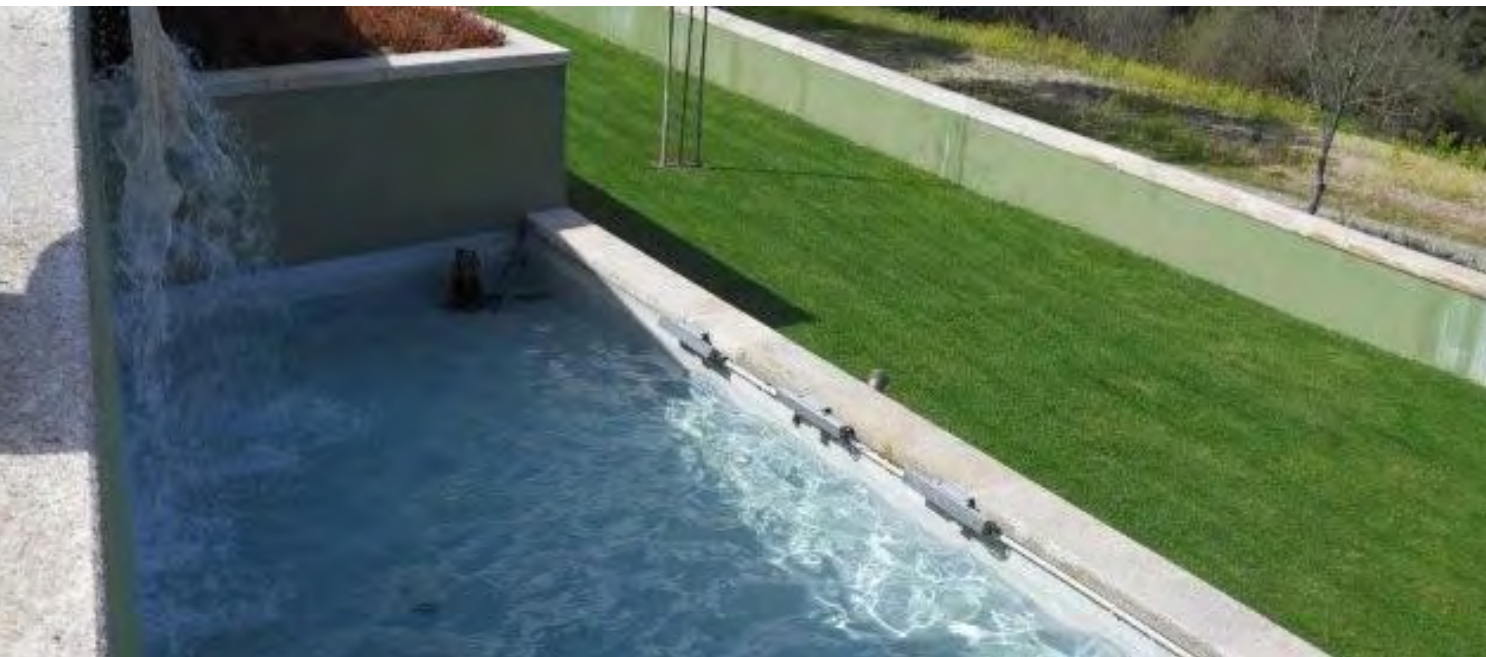
Lifting station

**PRODUCTS**

DRE 150



DRE





# HOTEL



**COUNTRY**

Lisbon (Portugal)

**PLANT/USE**

WWTP

**PRODUCTS**

DGN 550/2/80 - Nr. 2



DGN





# LUL VICTORIA STATION



## COUNTRY

London (United Kingdom)

## PLANT/USE

Lifting station

## PRODUCTS

DGN 300/4/80 Ex - Nr. 2



DGN





# ALEXANDER STADIUM



## COUNTRY

Birmingham (United Kingdom)

## PLANT/USE

WWTP

## PRODUCTS

BOXPRO S + DGN 300/4/80

BOXPRO J + DGN 400/4/80



**BOXPRO J**  
10000÷18000L



**BOXPRO S**  
4000÷9500L



**DGN**

99





# BRITANNIA STADIUM



**COUNTRY**  
Stoke on Trent (United Kingdom)

**PLANT/USE**  
WWTP

**PRODUCTS**  
BOXPRO S  
DGO 50





# BIRMINGHAM LIBRARY

**COUNTRY**

Birmingham (United Kingdom)

**PLANT/USE**

WWTP

**PRODUCTS**

BOXPRO J

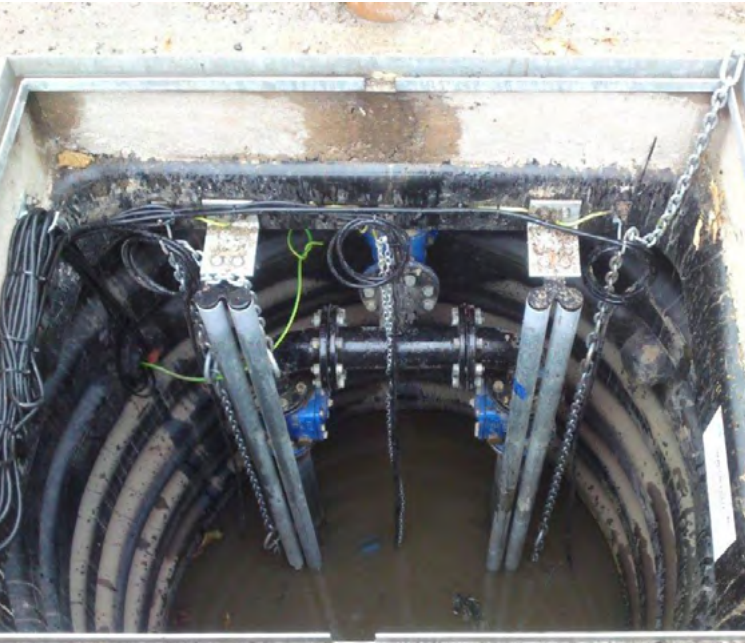
BOXPRO S

BOXPRO V

GRF 200/2/50

DGN 300/4/80 Ex

DGN 400/2/80 Ex





# BRITNED POWER STATION

**COUNTRY**

United Kingdom

**PLANT/USE**

WWTP

**PRODUCTS**

DGF 75/2/G50 Ex - Nr. 2

DGN 300/2/80T - Nr. 2



DGF



DGN





# ROYAL OAK PORTAL

**COUNTRY**

London (United Kingdom)

**PLANT/USE**

WWTP

**PRODUCTS**

MAN 550/2/80 - Nr. 2

DGO 200/2/80 - Nr. 2





# OAKENSHAW BECK

AGBRIGG

**COUNTRY**

Oakenshaw (United Kingdom)

**PLANT/USE**

WWTP

**PRODUCTS**

SBN 2500/6/300 - Nr. 3



SBN





# RETAIL PARK



## COUNTRY

Prestatyn (United Kingdom)

## PLANT/USE

Lifting station

## PRODUCTS

DGO 200/2/80 - Nr. 4

DGO 100/2/50 - Nr. 4



DGO





# INTERNAL DRAINAGE BOARD



## COUNTRY

Selby (England, UK)

## PLANT/USE

Lifting station

## PRODUCTS

Uniqa OC 250C11/6



UNIQA





# CARGO CENTER

**COUNTRY**

Manchester (United Kingdom)

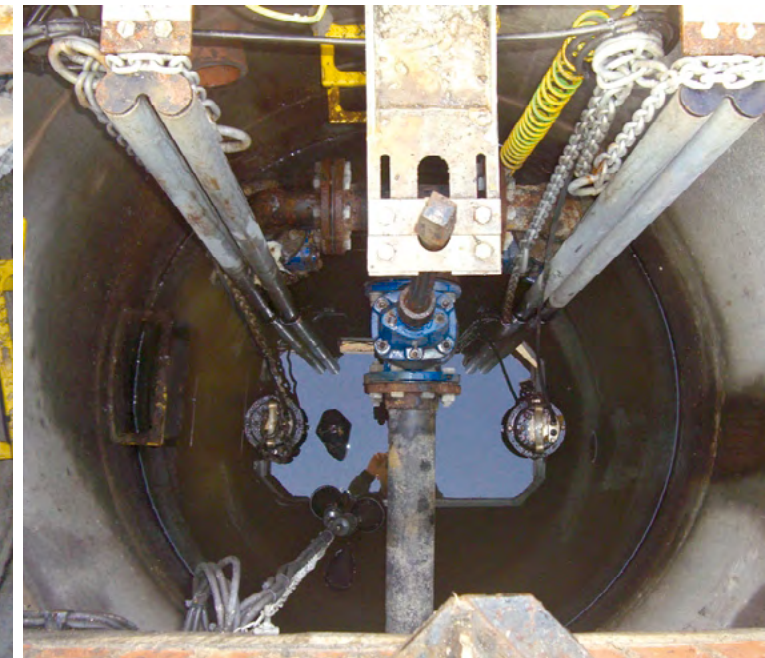
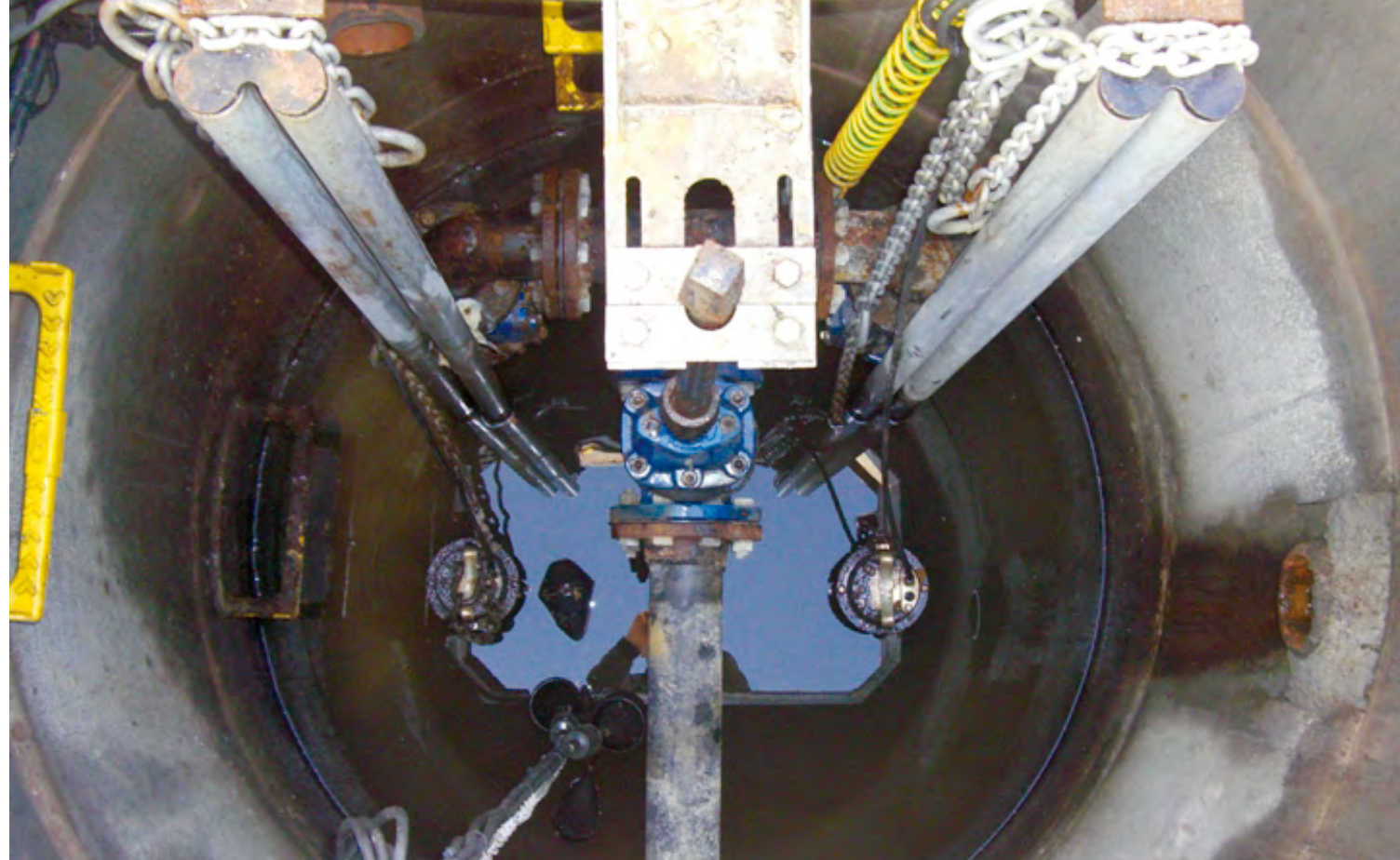
**PLANT/USE**

Lifting station

**PRODUCTS**

DRN 400/4/80 - Nr. 8

SMP 1000/4/100 - Nr. 4





# SUNBORN HOTELS

**COUNTRY**

London (Great Britain)

**PLANT/USE**

Sunborn Yacht Hotel Boat/Lifting station

**PRODUCTS**

DGN 750/4/80 - Nr. 1



DGN





# GELREDOME VOETBALSTADION

**COUNTRY**

The Netherlands

**PLANT/USE**

Lifting stations

**PRODUCTS**

GRN 300/4/80



GRN





# SLINGELAND HOSPITAL

**COUNTRY**

The Netherlands

**PLANT/USE**

Lifting station

**PRODUCTS**

GRF 200/2/G40 A1

DGN 300/2/80

SBP 750/4/150





# PALEIS HET LOO MUSEUM

**COUNTRY**

The Netherlands

**PLANT/USE**

WWTP

**PRODUCTS**

Uniqa OC 150A 15/4 - Nr.4



UNIQA





# DIERENRIJK ZOO



**COUNTRY**

The Nederlands

**PLANT/USE**

WWTP

**PRODUCTS**

Uniqa OC 100A 9/4





# CHICKEN SLAUGHTERHOUSE



**COUNTRY**

Holland

**PLANT/USE**

Chicken slaughterhouse

**PRODUCTS**

ZUG OC 080G 18.5/2 AW 195



UNIQA





# SLAGHAREN

THEME PARK



## COUNTRY

Holland

## PLANT/USE

Sollevamento acque chiare, giochi d'acqua, irrigazione

## PRODUCTS

Uniqa OC 150A 15/4 AW 270



UNIQA

114





# KIA MOTORS

**COUNTRY**

Zilina (Slovakia)

**PLANT/USE**

Lifting station

**PRODUCTS**

SBN 5000/4/200 - Nr. 3



SBN





# CHATEAU BELÀ



**COUNTRY**

Makow (Slovakia)

**PLANT/USE**

Lifting station

**PRODUCTS**

DRE 200/2/G50H - Nr. 4



DRE





# T&M AUTOHOF

**COUNTRY**

Nove Zamky (Slovakia)

**PLANT/USE**

Lifting station

**PRODUCTS**

MAN 400/4/100 - Nr. 2



117



# MUNICIPALITY OF POZAREVAC

**COUNTRY**

Pozarevac (Serbia)

**PLANT/USE**

WWTP

**PRODUCTS**

SBN 3000/4/150 - Nr. 3





# SREBRO LAKE



## COUNTRY

Srebro lake (Serbia)

## PLANT/USE

Lifting station

## PRODUCTS

SBN 5000/4/200 - Nr. 1



SBN





# SREDNJI BANAT

**COUNTRY**

Zrenjanin (Serbia)

**PLANT/USE**

Drainage plant

**PRODUCTS**

SBN 2500/6/300 - Nr. 1



SBN





# NEW RESIDENTIAL AREA

**COUNTRY**

Madrid (Spain)

**PLANT/USE**

Lifting station

**PRODUCTS**

DRP 1500/2/100 - Nr. 4



DRP





# TAV SKOPJE AIRPORT

**COUNTRY**

Macedonia

**PLANT/USE**

WWTP and lifting station

**PRODUCTS**

GRBluePRO 100 - Nr. 6

DGBLue PRO 75 - Nr. 6



GR BLUEPRO



DG BLUE





## REINACH MUNICIPALITY



## COUNTRY

Reinach Aargau (Switzerland)

## PLANT/USE

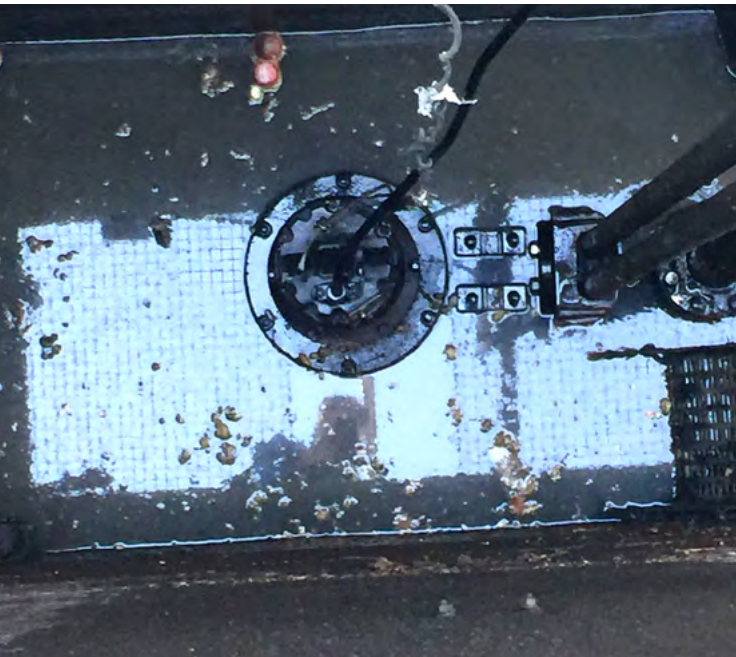
Waste water and sewage lifting station

## PRODUCTS

UNIQA Chopper ZUG CP 100F 3/4 AW 170 PA - Nr. 1



UNIQA CHOPPER





# SIVAG AG

**COUNTRY**

Austria

**PLANT/USE**

Wastewater lifting

**PRODUCTS**

blueBOX 400L - Nr. 1

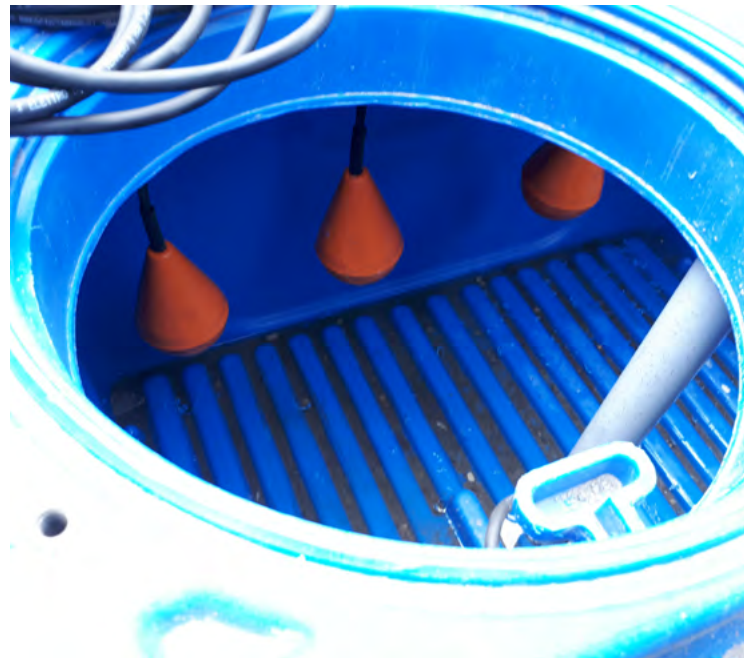
DGE 75/2/G50V - Nr. 1



DGE



BLUEBOX





The background is a green-tinted photograph of a city street scene, possibly a market or a busy urban area, with various structures and people visible. A large white circle is superimposed over the center of the image, framing the text.

AFRICA /  
MIDDLE EAST



# AMRAN BRIDGE



**COUNTRY**

Yemen

**PLANT/USE**

WWTP

**PRODUCTS**

SBN 5000/4/250 - Nr. 2



SBN



# PRESIDENTIAL BRIDGE



**COUNTRY**

Yemen

**PLANT/USE**

WWTP

**PRODUCTS**

SBN 5000/4/250 - Nr. 5



SBN



# ZIG ZAG TOWERS



**COUNTRY**

Doha (Qatar)

**PLANT/USE**

Lifting stations

**PRODUCTS**

GRN 400/4/100 - Nr.8

GR Blue PRO 150/2/G40 - Nr.6





# MINISTRY OF OIL

PETROLEUM PLANTS



## COUNTRY

Iraq

## PLANT/USE

Lifting station

## PRODUCTS

DRF 75/2/G40V A1CM-EX - Nr. 60



DRF

127





# COMMERCIAL AREA

**COUNTRY**

Basra (Iraq)

**PLANT/USE**

WWTP

**PRODUCTS**

DRP 2000

SBN 4000

SBN 5000

Uniqa OC300C 90/6AW



DRP

SBN

UNIQA



# KING FAHD CAUSEWAY BRIDGE

**COUNTRY**

Bahrain (Saudi Arabia)

**PLANT/USE**

Lifting station

**PRODUCTS**

GR Blue PRO 150-200 - Nr. 22



GR BLUEPRO



# NURAI ISLAND



**COUNTRY**  
Abu Dhabi (United Arab Emirates)

**PLANT/USE**  
Lifting station

**PRODUCTS**  
GRN 250/2/G40H  
GRP 750/2/G50H



129



# CIA BUILDING



**COUNTRY**  
Jordan

**PLANT/USE**  
WWTP

**PRODUCTS**  
GRE 200/2/G50H - Nr. 2





# PUBLIC SECURITY

**COUNTRY**

Jordan

**PLANT/USE**

Lifting station

**PRODUCTS**

GRE 200/2/G50H - Nr. 1

GRS 100/2/G40H - Nr. 2



GRE



GRS



# CIVIL DEFENSE

**COUNTRY**

Jordan

**PLANT/USE**

Lifting station

**PRODUCTS**

DGE 200/2/G50V - Nr. 2

GRS 100/2/G40H - Nr. 1



DGE



GRS



# JOWAYDEH PRISON

**COUNTRY**

Jordan

**PLANT/USE**

WWTP

**PRODUCTS**

DGN 250/2/65 - Nr. 6

DGN 550/2/65 - Nr. 2



DGN



# SCIENTIFIC APPLIED UNIVERSITY

**COUNTRY**

Jordan

**PLANT/USE**

Lifting station

**PRODUCTS**

DRE 50/2/G32V - Nr. 1

DRE 200/2/G50V - Nr. 1



DRE



# AMMAN MUNICIPALITY

**COUNTRY**

Jordan

**PLANT/USE**

Lifting station

**PRODUCTS**

DGE 50/2/G50V - Nr. 2

DR Blue 100/2/G32V - Nr. 1

DGE 150/2/G50V - Nr. 1



# AL-MAFRAQ PARK

**COUNTRY**

Jordan

**PLANT/USE**

Lifting station

**PRODUCTS**

DRE 50/2/G32V - Nr. 2





# MINISTRY OF FINANCE

**COUNTRY**

Jordan

**PLANT/USE**

WWTP

**PRODUCTS**

DGE 50/2/G50V - Nr. 2  
DGE 75/2/G50V - Nr. 2  
DGE 150/2/G50V - Nr. 3



DGE



# UNIVERSITY OF JORDAN

**COUNTRY**

Jordan

**PLANT/USE**

Lifting station

**PRODUCTS**

DRE 50/2/G32V - Nr. 1  
DRE 200/2/G50V - Nr. 1



DRE



# STEM CELL

RESEARCH CENTRE

**COUNTRY**

Jordan

**PLANT/USE**

Lifting station

**PRODUCTS**

DRE 50/2/G32V - Nr. 1

GRS 100/2/G40H - Nr. 1



DRE



GRS



# AL-RA'L

PRINTING PRESS

**COUNTRY**

Jordan

**PLANT/USE**

WWTP

**PRODUCTS**

APN 250/2/G50V - Nr. 2

APN 300/2/G50V - Nr. 2

MAN 550/2/65 - Nr. 2

MAN 550/2/80 - Nr. 2

DRE 200/2/G50V - Nr. 4



APN



MAN



DRE



# MADA'EN MARKET

**COUNTRY**

Jordan

**PLANT/USE**

Lifting station

**PRODUCTS**

DRE 200/2/G50V - Nr. 1

DGE 200/2/G50V - Nr. 5



# MINISTRY OF AGRICULTURE

**COUNTRY**

Jordan

**PLANT/USE**

Lifting station

**PRODUCTS**

DRE 100/2/G32V - Nr. 4





# CAPITAL SECTOR BRIDGE



**COUNTRY**  
Yemen

**PLANT/USE**  
WWTP

**PRODUCTS**  
SBN 5000/4/250 - Nr. 9



# LEBANESE NATIONAL LIBRARY



**COUNTRY**  
Lebanon

**PLANT/USE**  
Lifting station

**PRODUCTS**  
DG Blue 75/2/G40V - Nr. 2  
APBluePRO 150/2/G40H - Nr. 2





# PARALLEL TOWERS



**COUNTRY**

Lebanon (Beirut)

**PLANT/USE**

WWTP

**PRODUCTS**

DG Blue 200/2/G50V - Nr. 4



DG BLUE





# PEPSI HUB

**COUNTRY**

Lebanon

**PLANT/USE**

Lifting station

**PRODUCTS**

DRE 200/2/G50H - Nr. 2

DG Blue 50/2/G40H - Nr. 2



DRE



DG BLUE



138



# TALLEH

**COUNTRY**

Lebanon

**PLANT/USE**

Lifting station

**PRODUCTS**

DGBluePRO 200/2/G50V - Nr. 2

DRBluePRO 75/2/G32V - Nr. 2



DG BLUEPRO



DR BLUEPRO



# ZAITUNAY BAY

BEIRUT MARINA



## COUNTRY

Beirut (Lebanon)

## PLANT/USE

WWTP and lifting station

## PRODUCTS

DRY 400/4/80 - Nr. 2

DRY 300/4/80 - Nr. 34

DGX 100/2/G50V - Nr. 2



DRY



DGX





# SAVOLA GROUP

EDIBLE OIL REFINING



## COUNTRY

Algeria

## PLANT/USE

WWTP and lifting station

## PRODUCTS

DGN 200/4/80 - Nr. 8

DGO 150/4/80 - Nr. 6





# FOREMHYD

**COUNTRY**

Algeria

**PLANT/USE**

Civil lifting

**PRODUCTS**

ZUG OC 150E 160/4 AW 500 - Nr. 5



UNIQA





# DAWMAT AL JANDAL



**COUNTRY**  
Saudi Arabia

**PLANT/USE**  
Water lifting

**PRODUCTS**  
UNIQA Uniqa OC 300B 90/4 AW - Nr. 2



UNIQA





# SAUDI ARABIA GOVERNMENT



**COUNTRY**  
Saudi Arabia

**PLANT/USE**  
WWTP

**PRODUCTS**  
OC 300G 220/4 AW - Nr. 2



UNIQA





# HASSAN II MOSQUE

**COUNTRY**

Marocco

**PLANT/USE**

Rainwater drainage

**PRODUCTS**

ZUG OC100H 9/4AW 270 - Nr.5

DAC 100/100V+KAF 116-2" - Nr.5

FLX Valve G40 - Nr.5



UNIQA



DAC V



FLX





ONEE

COMMUNE RURALE D'ECH-CHELLALATE



## COUNTRY

Casablanca, Maroc

## PLANT/USE

Stations de relevage

## PRODUCTS

SBN 5000/4/150 G1LT - Nr.2

SBN 5000/4/150 H1LT - Nr.2



SBN





# RADEES

**COUNTRY**

Safi, Maroc

**PLANT/USE**

Wastewater treatment

**PRODUCTS**

ZUG OC080W 22/2AW 204





# RADEEM

**COUNTRY**

Meknes, Maroc

**PLANT/USE**

Rainwater drainage

**PRODUCTS**

DGBLUEP 75/2/G40V A1BT5 - Nr. 4

GRI 200/2/G50H - Nr. 2



DG BLUEPRO



GRI





# AMENDIS

**COUNTRY**

Tanger, Maroc

**PLANT/USE**

Wastewater lifting

**PRODUCTS**

ZUG OC 150B 75/4 AD 385 - Nr. 3

ZUG OC 150E 110/4 AD 433 - Nr. 3





# KENITRA

**COUNTRY**

Kenitra, Maroc

**PLANT/USE**

Wastewater treatment

**PRODUCTS**

ZUG OC 100F 7,5/4 AD 250 - Nr. 3



UNIQA





# RADEEJ

**COUNTRY**

El Jadida, Maroc

**PLANT/USE**

Wastewater treatment

**PRODUCTS**

ZUG OC 300A 45/6 AW 430 - Nr. 1

ZUG OC 080A 7,5/2 BW 158 - Nr. 1

ZUG OC 100J 18,5/2 AW 185 - Nr. 1





## ONEE



## COUNTRY

Fes, Maroc

## PLANT/USE

Wastewater lifting

## PRODUCTS

ZUG OC 100F 45/2 AW 220 - Nr. 2

ZUG OC 100F 37/2 AW 210 - Nr. 6

ZUG GR 050B 9/2AW 200

ZUG HP 050B 11/2AW 222

ZUG GR 050B 11/2AW 222

ZUG GR 050A 4/2AW 150



UNIQA





# RADEEC

**COUNTRY**

Settat, Maroc

**PLANT/USE**

Wastewater lifting

**PRODUCTS**

ZUG V100A 37/2HW 220 - Nr. 3





# ONAS SFAX

**COUNTRY**

Tunisia

**PLANT/USE**

Wastewater lifting

**PRODUCTS**

ZUG OC 300A 37/6 AW 400 - Nr. 2

ZUG OC 150G 22/4 AW 275 - Nr. 2

ZUG OC 080H 3/4 AW 200 - Nr. 1

ZMD 020A A 1,1/4AE010 - Nr. 1

ZUG OC 150F 18,5/4 AW 269 - Nr. 2



UNIQA



MIXERS





# AZUR CITY COMMERCIAL CENTRE

**COUNTRY**

Tunis, Tunisia

**PLANT/USE**

Wastewater lifting

**PRODUCTS**

ZUG V 100B 7,5/4 AW 245 - Nr. 2

ZUG OC 150F 18,5/4 AW 269 - Nr. 2



UNIQA





# INDUSTRIAL ZONE OF TEJRA

**COUNTRY**

Medenine, Tunisia

**PLANT/USE**

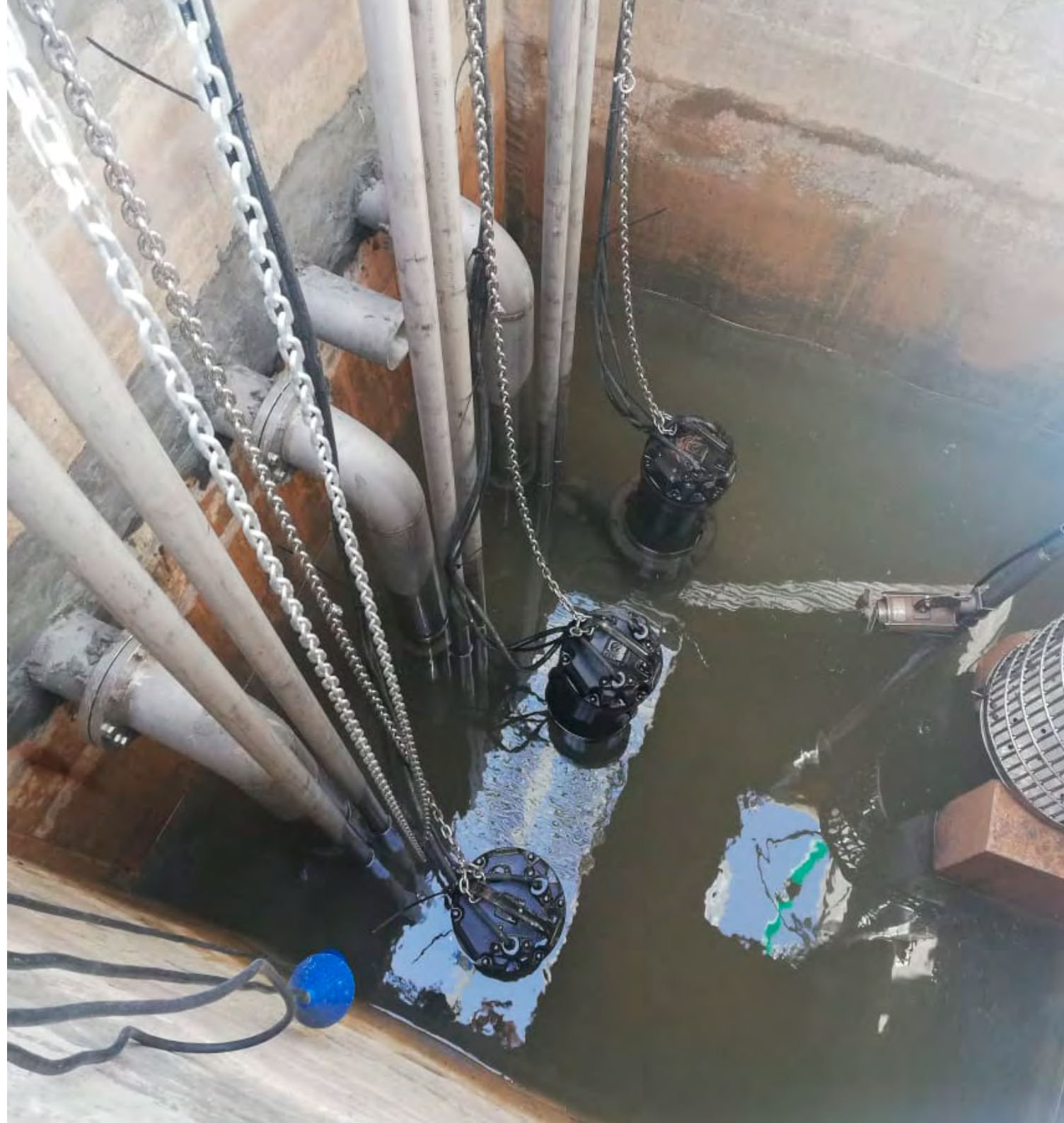
Raw wastewater

**PRODUCTS**

3x ZUG V080D 37/2HW 230



UNIQA





# LOGISTIC CENTRE ULC-CARREFOUR

**COUNTRY**

Tunisi, Tunisia

**PLANT/USE**

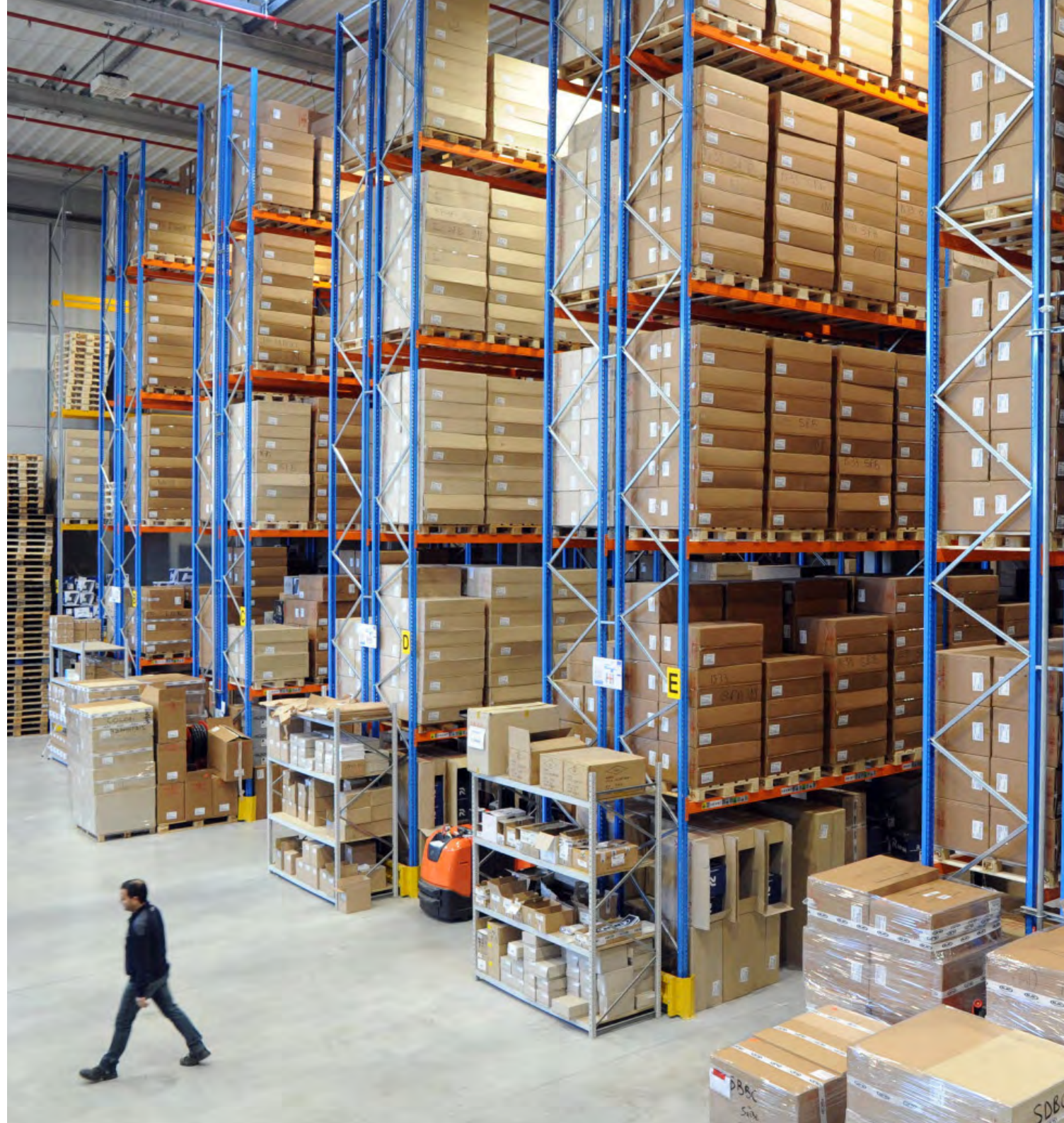
Rainwater drainage

**PRODUCTS**

ZUG OC 100L 5,5/4 AW 215 - Nr. 5



UNIQA





# MINISTRY OF HEALTH

**COUNTRY**

Jordan

**PLANT/USE**

WWTP

**PRODUCTS**

DGE 100/2/G50V - Nr. 2



DGE



## NEW BMC HOSPITAL

BENGHAZI,

**COUNTRY**

Libya

**PLANT/USE**

Evacuation system

**PRODUCTS**

UniqA V080B 15/2AW 185 EX - Nr. 2

SMN 3000/4/150 A1LT - Nr. 4 / DRP 750/4/100 A0HT - Nr. 4

APN 300/2/G50H A1DT - Nr. 1 / DGN 400/4/80 A1FT - Nr. 1





# RAK CERAMICS FACTORY

**COUNTRY**

U.A.E.

**PLANT/USE**

Lifting of acid and aggressive water and brine

**PRODUCTS**

OC200A 18,5/4AW - Nr.6

OC100F 22/2AW - Nr.2



UNIQA





# SANG PROJECT



**COUNTRY**

Saudi Arabia

**PLANT/USE**

Wastewater lifting

**PRODUCTS**

OC200B 45/4AW - Nr.3





## DRINKING WATER SUPPLY PROJECT

**COUNTRY**

Siguiri, Guinea

**PLANT/USE**

Clear wastewater lifting, water features, irrigation

**PRODUCTS**

ZUG OC150G 30/4AW 305 - Nr. 3

ZUG OC100F 22/2AW 170 -Nr. 4



UNIQA





# AQUACULTURE

**COUNTRY**

Madagascar

**PLANT/USE**

Process/machining wastewater lifting

**PRODUCTS**

ZUG OC 300A 22/6 AW - Nr. 10

SBN 3000/6/300 - Nr. 5

SMP 750/4/100 - Nr. 4

SBN 6500/4/300



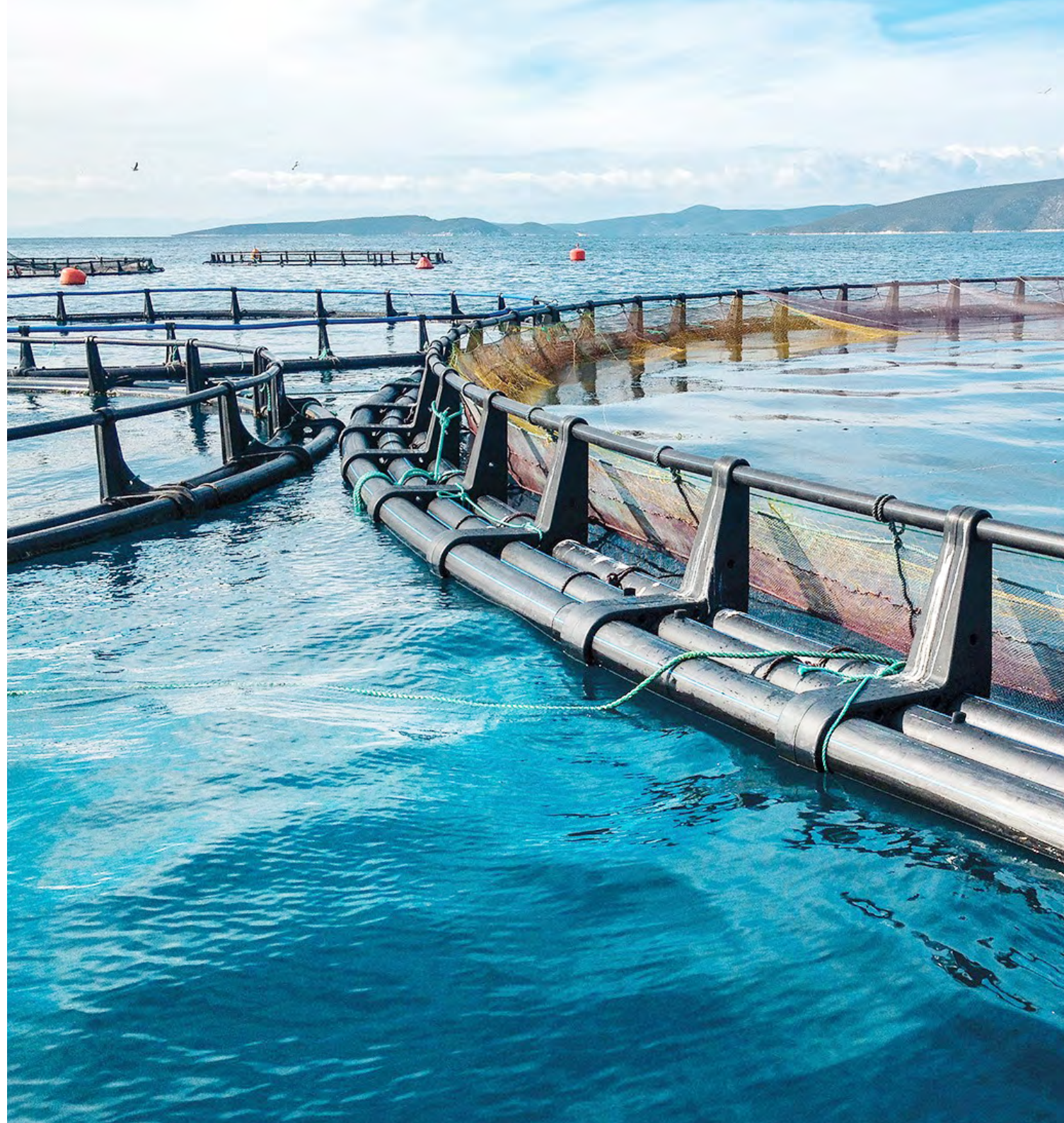
UNIQA



SBN



SMP







ASIA / OCEANIA



# AGIP KCO KARABATAN



**COUNTRY**  
Kazakhstan

**PLANT/USE**  
Lifting station

**PRODUCTS**  
DRE 75/2/G32V - Nr. 1



DRE





# RAFFLES COUNTRY CLUB

**COUNTRY**

Singapore

**PLANT/USE**

Lifting station

**PRODUCTS**

SMP 2000/4/200 - Nr. 4



SMP





# MARINA BAY F1 STREET CIRCUIT

**COUNTRY**

Singapore

**PLANT/USE**

Lifting station

**PRODUCTS**

DRP 1000/4/150 - Nr. 2

DRN 250/2/80 - Nr. 1





# MARINA BARRAGE

**COUNTRY**

Singapore

**PLANT/USE**

Lifting and dewatering station

**PRODUCTS**

SBN 4000/4/250 - Nr. 2

DRY 400/2/80 - Nr. 2

DGX 50/2/G50V - Nr. 4

DRN 200/2/80 - Nr. 2

DRB 200/2/G50V - Nr. 1





# INTERNATIONAL AIRPORT

**COUNTRY**

Changi (Singapore)

**PLANT/USE**

WWTP and lifting station

**PRODUCTS**

DRN - Nr. 18

DRP - Nr. 18





# GENERAL HOSPITAL

**COUNTRY**

Singapore

**PLANT/USE**

WWTP and lifting station

**PRODUCTS**

DGO - Nr. 40

DRN - Nr. 40

DRP - Nr. 40



DGO



DRN



DRP

168





# UNIVERSAL STUDIO

**COUNTRY**

Singapore

**PLANT/USE**

WWTP and lifting station

**PRODUCTS**

SBN 5000 - Nr. 2

DRP 2000 - Nr. 8





# INTERNATIONAL AIRPORT



**COUNTRY**  
Bangkok (Thailand)

**PLANT/USE**  
Lifting station

**PRODUCTS**  
DRF - Nr. 20





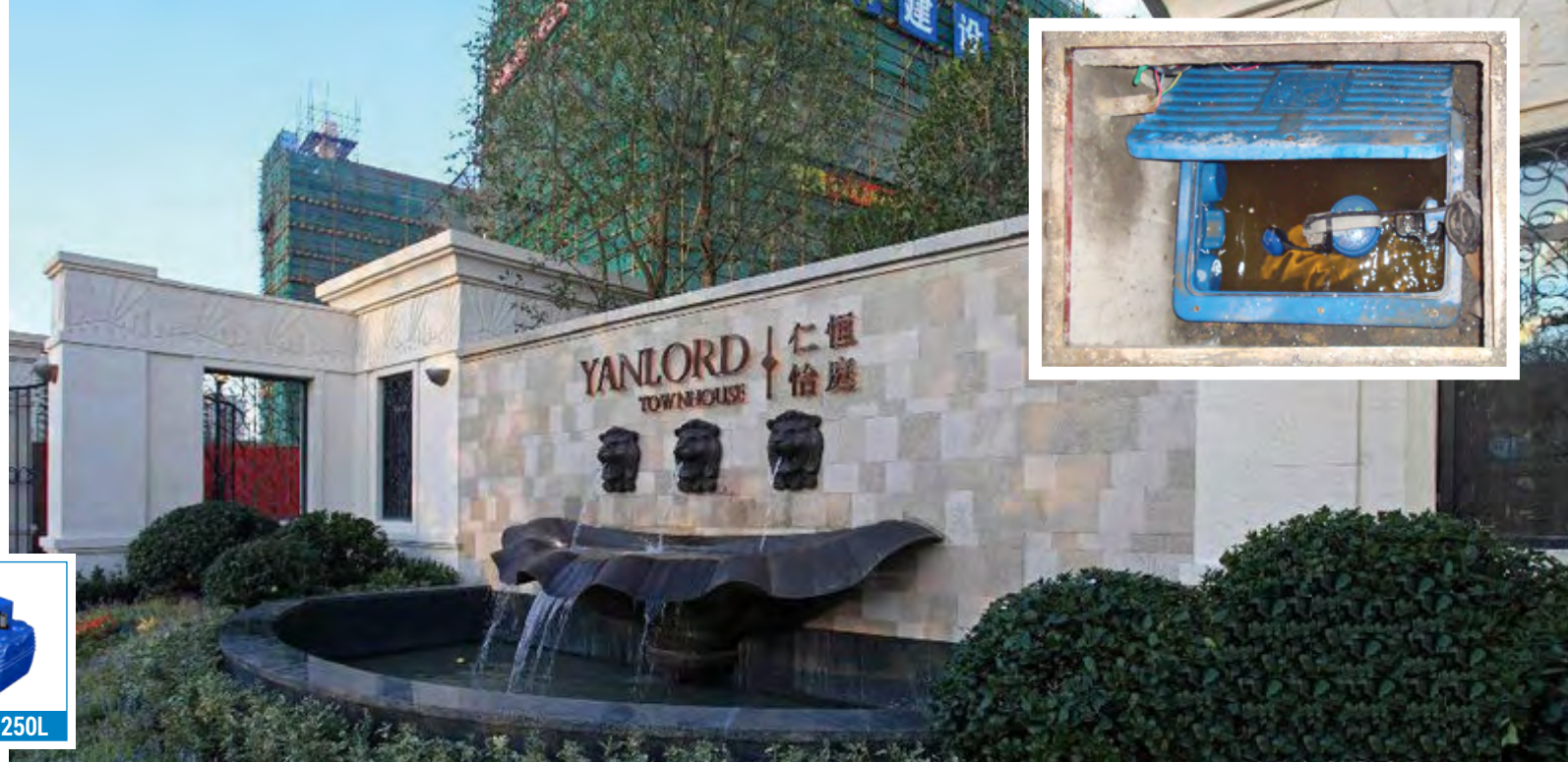
# YANLORD YI TING VILLA



**COUNTRY**  
Shanghai (China)

**PLANT/USE**  
Lifting station

**PRODUCTS**  
BlueBox 250L - Nr. 70



# TOMSON



**COUNTRY**  
Shanghai (China)

**PLANT/USE**  
WWTP

**PRODUCTS**  
GRBluePRO 150/2/G40H - Nr. 10





## FOSHAN



## COUNTRY

Foshan (China)

## PLANT/USE

Lifting station

## PRODUCTS

SBN 3000/4/200 - Nr 3



## TAOHUANJIANG NUCLEAR STATION



## COUNTRY

Hunan China

## PLANT/USE

Lifting station

## PRODUCTS

DRY 750/2/80 - Nr. 4

DGX 150/2/G50V - Nr. 4





# XIANYANG AIRPORT

**COUNTRY**

Xi'an (China)

**PLANT/USE**

Lifting station

**PRODUCTS**

BlueBox 400L - Nr. 36

APBluePRO - Nr. 36

MAN - Nr. 36



BLUEBOX 400L



AP BLUEPRO



MAN

173





# CROWNE PLAZA HOTELS

**COUNTRY**

Xi'an (China)

**PLANT/USE**

Lifting station

**PRODUCTS**

DRP 1000/2/80 - Nr. 2



DRP





# ASIAN GAMES STADIUM



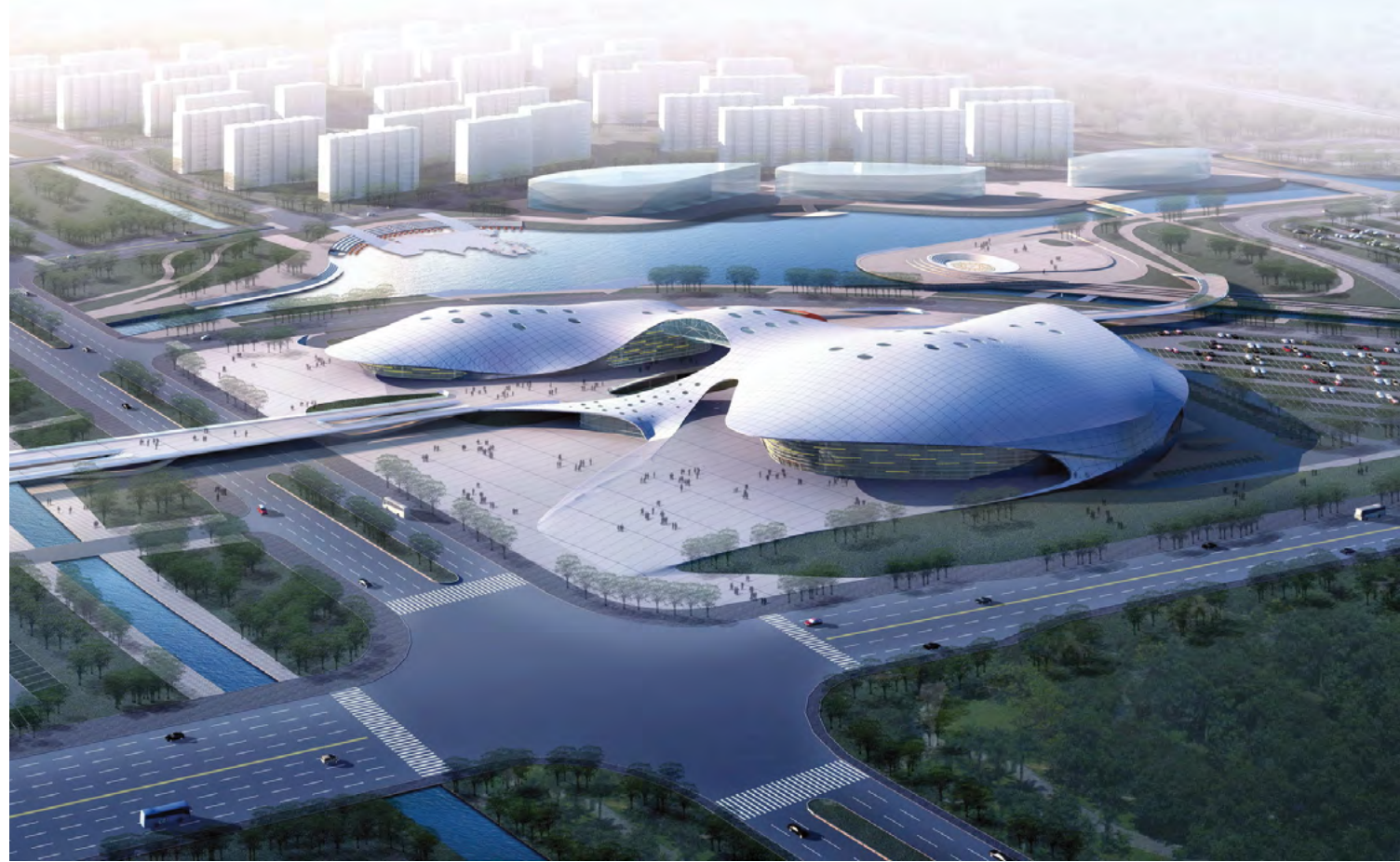
**COUNTRY**  
Guangzhou (China)

**PLANT/USE**  
Lifting station

**PRODUCTS**  
BlueBox 400L - Nr. 5



BLUEBOX 400L





# HIGH-SPEED RAILWAY STATION

**COUNTRY**

Wuxi (China)

**PLANT/USE**

Lifting station

**PRODUCTS**

BlueBox 400L - Nr. 4



BLUEBOX 400L





# ONE LINK WALK SQUARE



**COUNTRY**  
Guangzhou (China)

**PLANT/USE**  
WWTP

**PRODUCTS**  
BlueBox 400L - Nr. 6



BLUEBOX 400L





# SUN YAT-SEN

UNIVERSITY HOSPITAL



## COUNTRY

Guangzhou (China)

## PLANT/USE

Lifting station

## PRODUCTS

BlueBox 400L - Nr. 5



BLUEBOX 400L





# WEST RAILWAY STATION

**COUNTRY**

Tianjin (China)

**PLANT/USE**

WWTP

**PRODUCTS**

GRBluePRO 200/2/G40H - Nr. 4

BlueBox 90L - Nr. 4

BlueBox 400L - Nr. 4



GR BLUEPRO



BLUEBOX 90L



BLUEBOX 400L





# XUELONG



**COUNTRY**  
Shanghai (China)

**PLANT/USE**  
Lifting station

**PRODUCTS**  
SMP 750/2/80 - Nr. 2



SMP





## WHARF HOLDINGS



## COUNTRY

Suzhou China

## PLANT/USE

Lifting station

## PRODUCTS

DRN 300/2/65 - Nr. 63



DRN



## GREENTOWN



## COUNTRY

Hangzhou (China)

## PLANT/USE

Lifting station

## PRODUCTS

DR-Steel 75 - Nr. 150

GRBluePRO 150/2/G40H - Nr. 150



DR-STEEL



GR BLUEPRO



# MIRAMAR HOTELS

**COUNTRY**

Hongkong (China)

**PLANT/USE**

WWTP

**PRODUCTS**

GRS 100/2/G40H - Nr. 5

APN 550/2/G50H - Nr. 5

GRN 550/2/G50H - Nr. 5



GRS



APN



GRN





# HONG KONG POLICE

**COUNTRY**

Hong Kong China

**PLANT/USE**

Lifting station

**PRODUCTS**

GRS 100/2/G40H - Nr. 2



GRS





## VIENNA PLAZA



**COUNTRY**  
Shanghai (China)

**PLANT/USE**  
Lifting station

**PRODUCTS**  
GR Blue PRO 100 - Nr. 10  
BlueBOX 250L - Nr. 10



## SM CITY CENTER



**COUNTRY**  
Xiamen (China)

**PLANT/USE**  
Lifting station

**PRODUCTS**  
GR Blue PRO 100 - Nr. 4  
GRE 200/2/G40H - Nr. 4





# CADBURY FOOD CO.



**COUNTRY**  
Beijing (China)

**PLANT/USE**  
WWTP

**PRODUCTS**  
DG Blue PRO 200 - Nr. 5



DG BLUEPRO



# MEIHUASHANZHUANG



**COUNTRY**  
Shenzhen (China)

**PLANT/USE**  
Lifting station

**PRODUCTS**  
DR Blue 75 - Nr. 3  
DG Blue 75 - Nr. 3



DR BLUE



DG BLUE



# GOVERNMENT MUNICIPALITY



**COUNTRY**  
Bangkok (Thailandia)

**PLANT/USE**  
Drainage Pump Station

**PRODUCTS**  
UNIQA Uniq OC 300B 90/4 AW



UNIQA





# GOVERNMENT MUNICIPALITY - THAILAND



**CLIENT**  
Ministry of water and wastewater, Thailand

**PLANT/USE**  
Lifting station lake

**PRODUCTS**  
UNIQA Uniqa OC 500C 250/4 AD - Nr. 10



UNIQA





# YINCHUAN SAND LAKE

**COUNTRY**

China

**PLANT/USE**

Wastewater Plant

**PRODUCTS**

MAN 550/2/80 - Nr. 2





# PUNING COMMUNITY - CHENGDE

**COUNTRY**

China

**PLANT/USE**

Domestic sewage discharge solution

**PRODUCTS**

N Series - Nr. 2

BoxGRP - Nr. 1



MAN



BOXGRP

189





# SUIXI COUNTY

**COUNTRY**

Huaibei City, China

**PLANT/USE**

Pingshan Power Plant

**PRODUCTS**

Uniqa OC200G 132/4AW 460 - Nr. 1



UNIQA





# SUNMAX TECH PLAZA



**COUNTRY**

Shenzhen, China

**PLANT/USE**

WWTP and lifting station

**PRODUCTS**

BoxPRO V





# NINGBO HUAMAO DONGQIANHU HOTEL

**COUNTRY**

Ningbo, China

**PLANT/USE**

WWTP and lifting station

**PRODUCTS**

BoxGRP - Nr. 1

ZUG OC100F 7,5/4AD - Nr. 2





# REGIONAL COUNCIL

**COUNTRY**

Central Otago, New Zealand

**PLANT/USE**

WWTP and lifting station

**PRODUCTS**

Uniqua OC 100F 50Hz 45kW - Nr. 2

DAC 150/150V - Nr. 2





# WANDOONA QUARRY MOREE

**COUNTRY**

Moree, Australia

**PLANT/USE**

Lifting station

**PRODUCTS**

ZUG OC 100F 50Hz 37kW 2 poli - Nr. 1



UNIQA







# MEADOW MUSHROOMS FACILITY



**COUNTRY**  
Canterbury, New Zeland

**PLANT/USE**  
Clear wastewater lifting, water features, irrigation

**PRODUCTS**  
ZUG V08B 18.5/2 AW



UNIQA





A photograph of an industrial refinery at night, featuring a complex network of pipes, towers, and walkways illuminated by artificial lights. A large white circle is superimposed over the center of the image, framing the text.

# NORTH AMERICA



# SHOPPING CENTER STATION

**COUNTRY**

Delray Beach, Florida (USA)

**PLANT/USE**

WWTP and lifting station

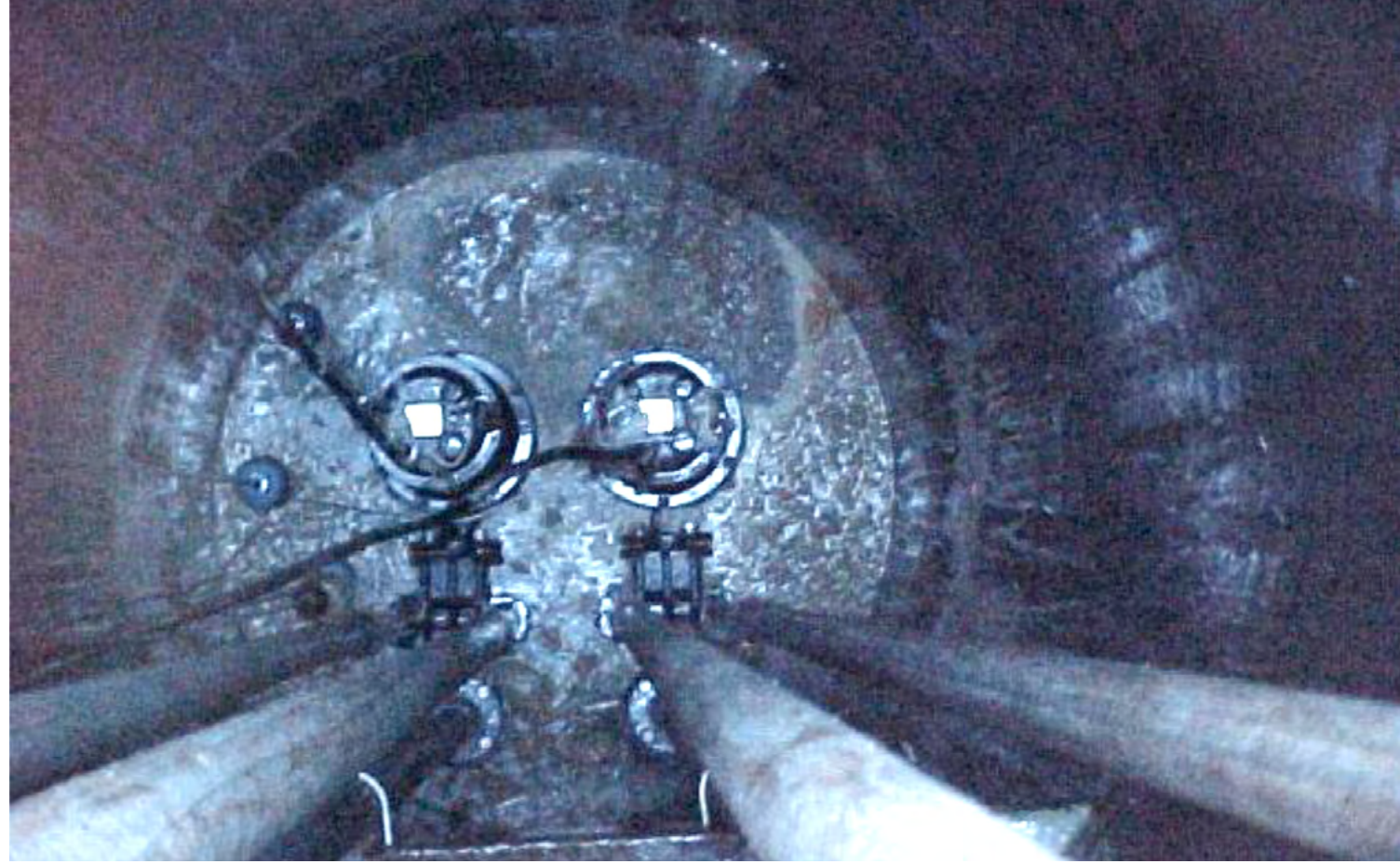
**PRODUCTS**

GRN 550/2/G50H - Nr. 2

GRN 300/2/G50H - Nr. 2



GRN





# FLORIDA TURNPIKE HIGHWAY

**COUNTRY**

Florida (USA)

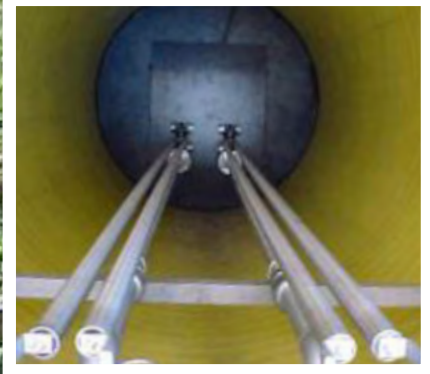
**PLANT/USE**

WWTP and lifting station

**PRODUCTS**

GRN 550/2/G50H - Nr. 2

GRN 300/2/G50H - Nr. 2



# HDPE MOPS STATION

**COUNTRY**

Palm Beach, Florida (USA)

**PLANT/USE**

Lifting station

**PRODUCTS**

GRN 550/2/G50H - Nr. 2





# HEAVY RESIDENTIAL SEWAGE & WASTEWATER

ATLANTIC ENVIRONMENTAL SYSTEMS, INC.



## COUNTRY

Lake Worth, Florida (USA)

## PLANT/USE

WWTP

## PRODUCTS

Uniqua Uniqua V080B 18,5/2 AW 165 - Nr. 2



UNIQA







# MINOR LEAGUE BASEBALL STADIUM

ATLANTIC ENVIRONMENTAL SYSTEMS, INC.



## COUNTRY

Palm Beach, Florida (USA)

## PLANT/USE

Lifting station

## PRODUCTS

UNIQA Uniqa 20HP/15kW - Nr. 2

DAC 100 - Nr. 2



UNIQA



DAC V





# SUBMERSIBLE PUMPS & WATER TREATMENT SOLUTIONS



## Electrical submersible pumps

A wide range of highly efficient motors, hydraulics optimised for the duty point and innovative materials for a vast variety of uses.

## Lifting stations

An effective solution for collecting and pumping wastewater to the sewer system, when a gravity feed is not available.

## Aeration and Mixing systems

Vast range of disc-shaped and tubular air diffusers, submerged aerators, mixers and flow-makers with self-cleaning propellers.

## Accessories

Hydraulic and electrical accessories to cover all your plant's installation and operating needs.

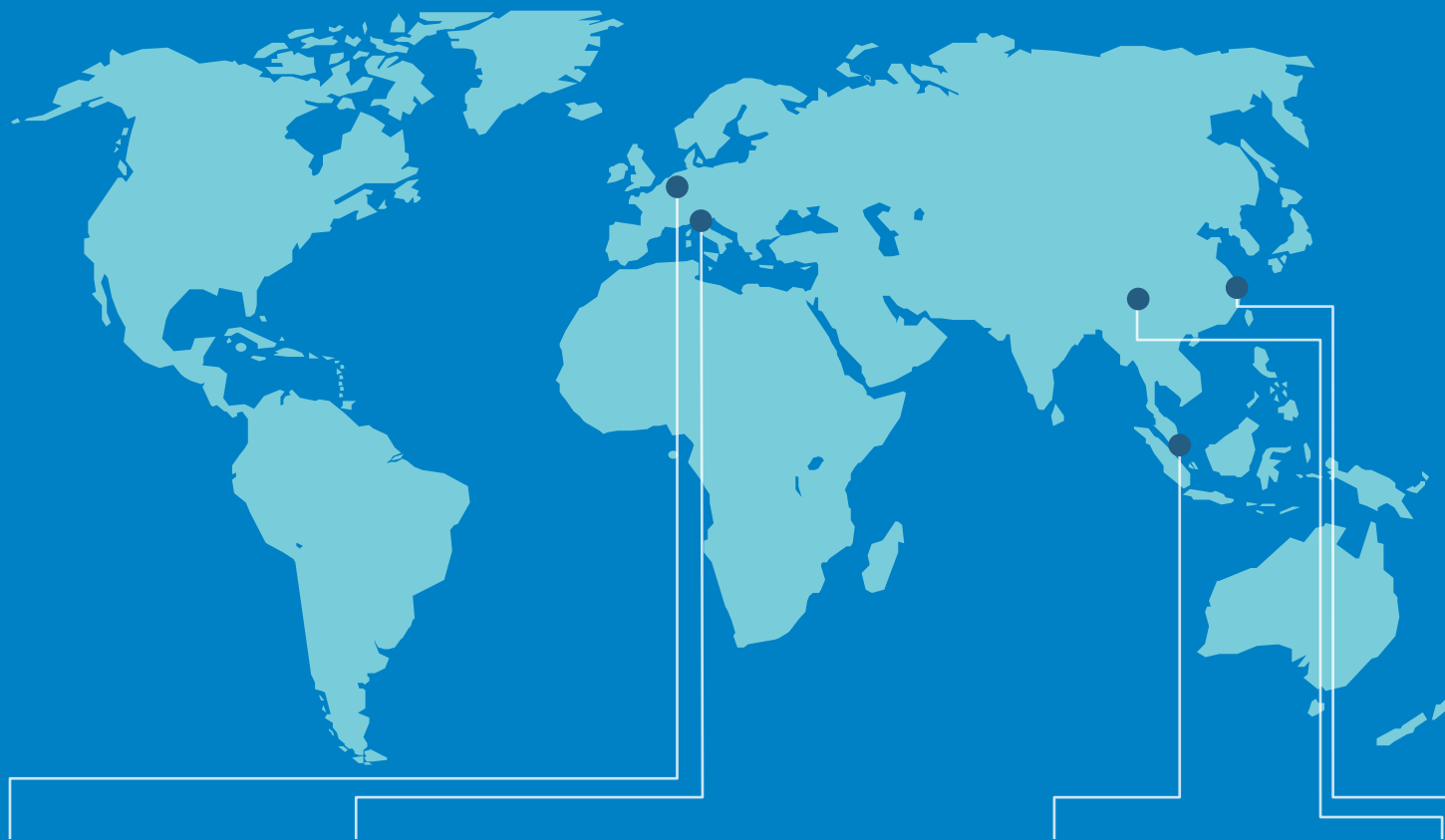




better together

# ZENIT GROUP IN THE WORLD

WITH OUR INTERNATIONAL PRESENCE  
WE CAN MANAGE OUR CUSTOMERS' NEEDS DIRECTLY



**ZENIT EUROPE**  
SALES OFFICE  
& REGIONAL OFFICE  
FOR EUROPE, THE MIDDLE  
EAST AND AFRICA

**ZENIT ITALIA**  
PRODUCTION SITE  
& SALES OFFICE  
FOR THE ITALIAN MARKET

**ZENIT ASIA PACIFIC**  
SALES OFFICE  
& REGIONAL OFFICE  
FOR THE ASIAN-PACIFIC  
AND OCEANIC MARKET

**ZENIT PUMPS CHINA**  
*CHENGDU-SUZHOU*  
PRODUCTION SITES  
& SALES OFFICES  
FOR THE CHINESE MARKET



# REFERENCE BOOK



better together

zenit.com

follow us   